



Tremadoc Road, SW4

£3,200 Per calendar month

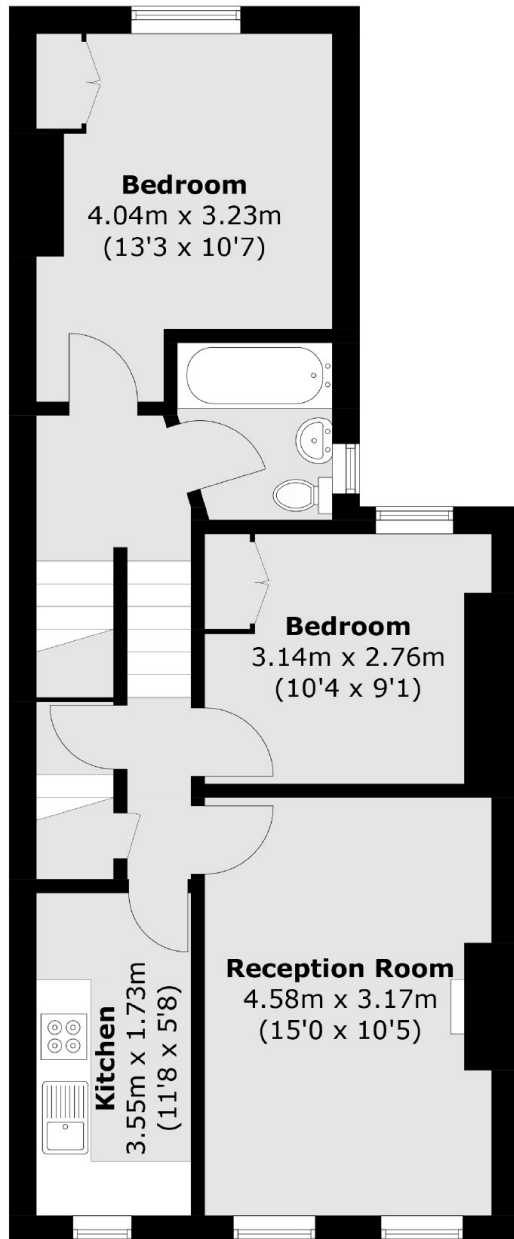
This three double bedroom top floor flat in the heart of Clapham, comes with a spacious reception room, separate kitchen, family bathroom and built-in storage throughout.

Located just off the bustling High Street and less than half a mile walk to Clapham North tube and Clapham High Street overground stations.

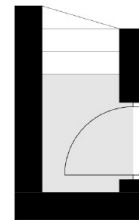
Features

- Top Floor Flat
- Three Double Bedrooms
- Open Plan Reception
- Modern Kitchen
- Neutral Interior
- Ideal Location

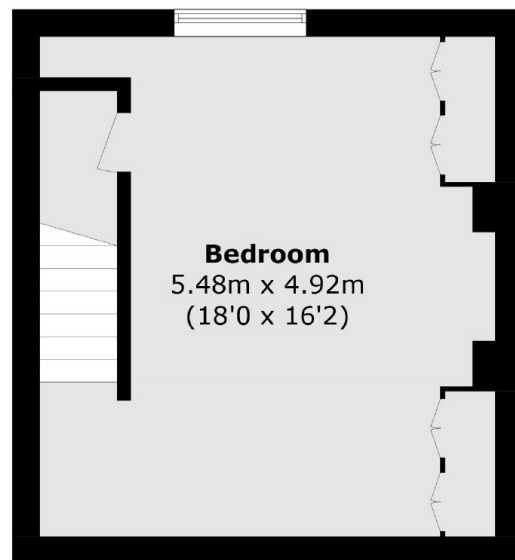
Tremadoc Road, London, SW4



Second Floor



First Floor



Third Floor

Total area (approx.): 84.7 sq. m (911.7 sq. ft)