



## Helix Gardens, SW2

£3,250 Per calendar month

This top floor flat which has been newly renovated throughout, comes with three bedrooms, an open plan reception room with feature fireplace, modern kitchen, wooden flooring and two bathrooms.

Located just over half a miles walk to Brixton Village's shops, bars and restaurants, as well as Brixton station which offers both overground and underground.

### Features

- Top Floor Flat
- Three Double Bedrooms
- Two Bathrooms
- Open Plan Reception
- Wooden Flooring
- Close To Transport



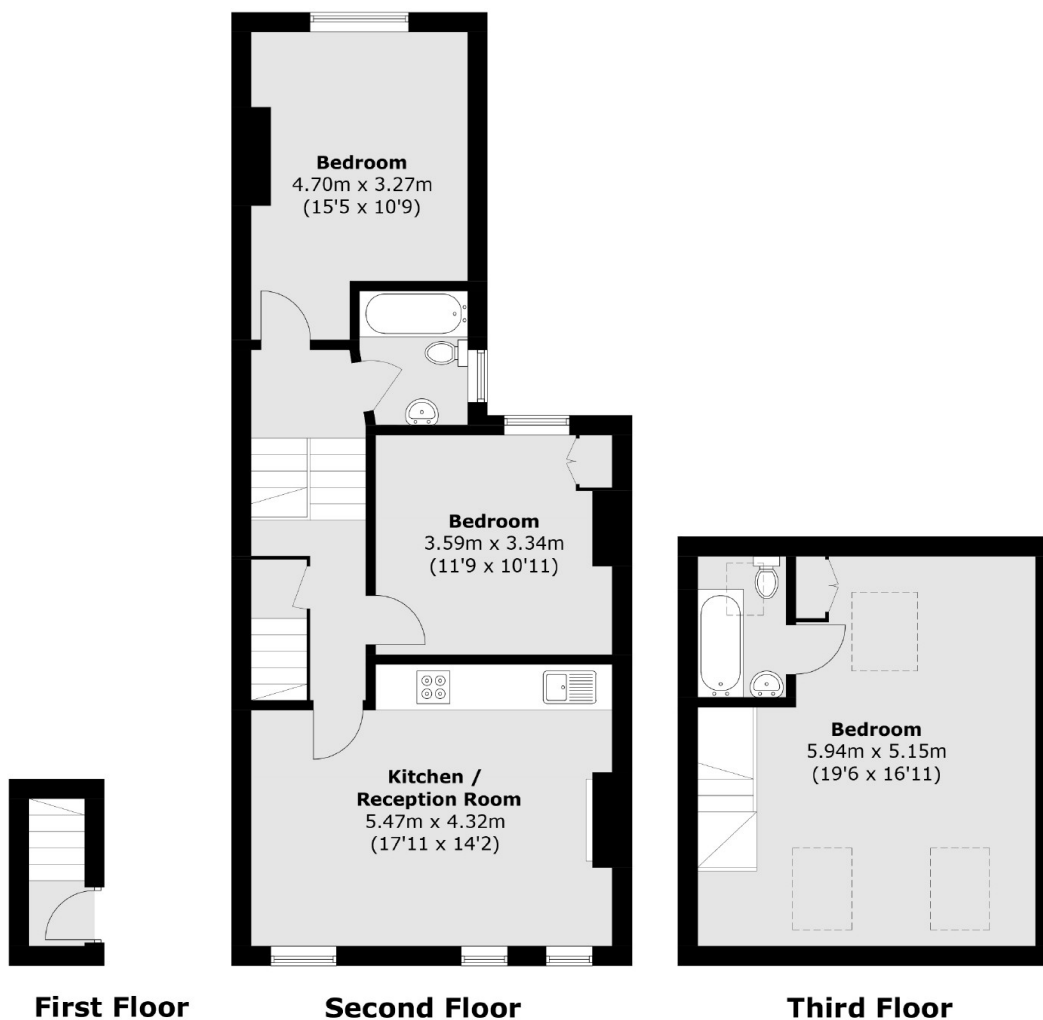
## Helix Gardens, SW2

Offering a spacious living and entertaining space split over two floors, this property is ideal for professional sharers.

The three double bedrooms come with built-in wardrobes and one has its own en suite bathroom.



# Helix Gardens, London, SW2



Total area (approx.): 95.8 sq. m (1,031.2 sq. ft)