



## Bedford Road, SW4

£2,200 Per calendar month

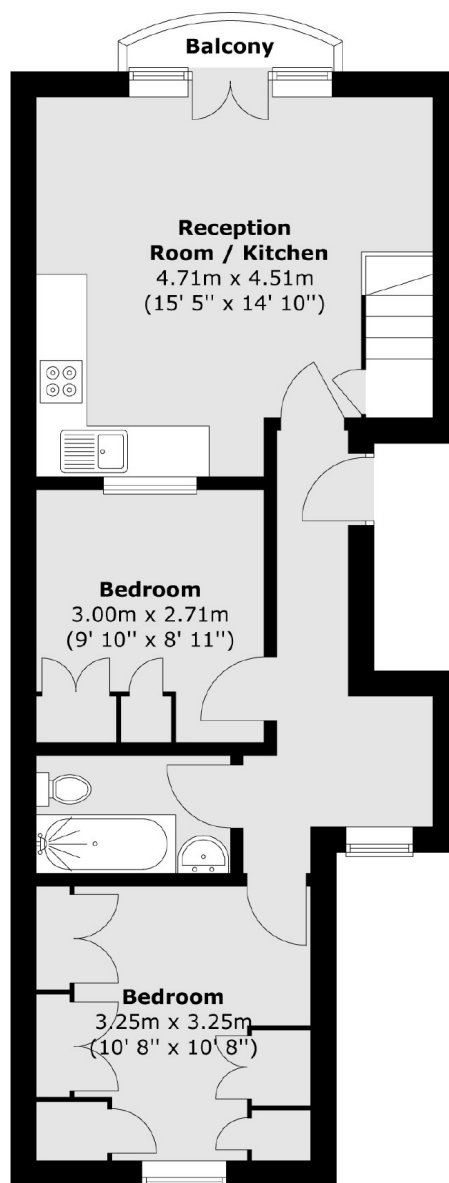
A modern first floor flat offering an open plan reception room and kitchen, a Juliet balcony and two double bedrooms. This property won't stay on the market for long. Ideal for professional sharers.

Literally opposite Clapham North underground and with the High Street on your doorstep, Bedford Road couldn't be better placed for young professional sharers.

### Features

- Two Double Bedrooms
- Open Plan Reception
- Wooden Flooring
- Juliet Balcony
- First Floor Flat
- Neutral Interior

# Bedford Road, London, SW4



Total area (approx.) : 50.6 sq. m (545 sq. ft)  
Total balcony area (approx.) : 1.2 sq. m (13 sq. ft)