



## Kings Head Passage, SW4

£3,000 Per calendar month

Finished to a high specification throughout, this two bedroom, two bathroom home is ideal for professional sharers or a couple. Offering an open plan reception room, a modern kitchen and a private balcony.

Set within a gated development and ideally located for the many local shops, restaurants and cafés of Abbeville Village, with Clapham South and Clapham Common stations a short distance away.

### Features

- Two Double Bedrooms
- Two Bathrooms
- Open Plan Reception
- Modern Kitchen
- Private Balcony
- Gated Mews



## Kings Head Passage, SW4

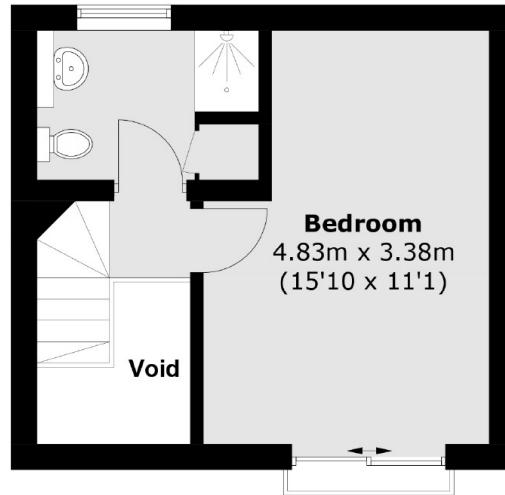
Arranged over three floors, the ground floor includes a spacious open plan reception/dining area and kitchen with a breakfast bar, along with a separate WC. All finished with wooden flooring.

The first floor provides a large double bedroom with built-in wardrobes, access to a large private balcony and a bathroom with a separate walk-in shower. On the second floor there is another large double bedroom and a stylish shower room.

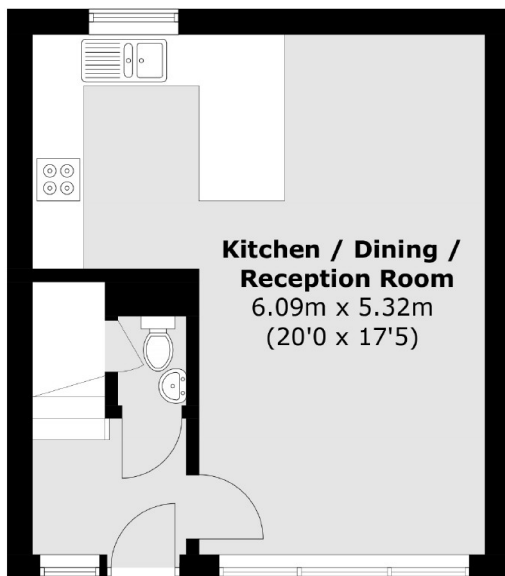




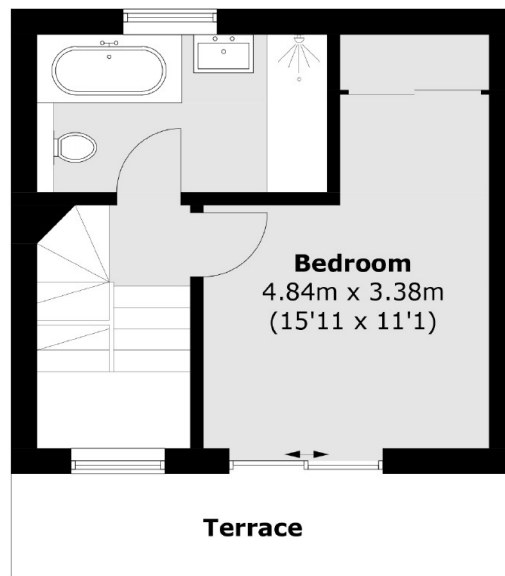
# Kings Head Passage, London, SW4



**Second Floor**



**Ground Floor**



**First Floor**

Total area (approx.): 81.4 sq. m (876.2 sq. ft)  
(Excluding Void)  
Terrace: 7.4 sq. m (79.6 sq. ft)