



Wheatleys Eyot, TW16  
£949,950

Waterview  


A spectacular riverside home set in this idyllic, secluded part of the Thames. The house has just been built by the current owners offering well proportioned rooms throughout and finished to the highest of standards.

Wheatleys Eyot is an island on the Thames at Sunbury-Upon-Thames.





Accommodation is made up of a large living/dining room which leads out on to a decking area overlooking the river and steps down to a beautifully landscaped garden. The ground floor also consists of a downstairs bedroom offering en suite with a further WC, study room and plenty of storage areas.

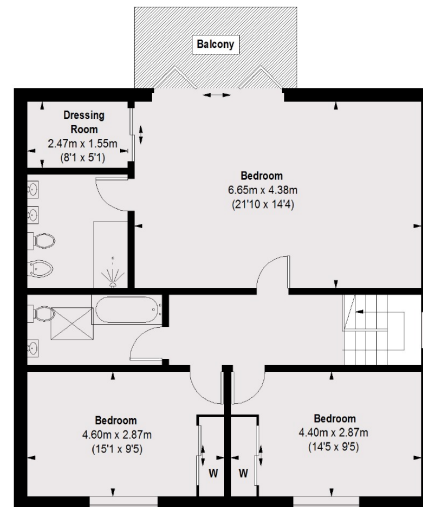
On the first floor there are three further double bedrooms. Two double bedrooms have the use of a family bathroom and a huge master bedroom offering an en-suite and walk in wardrobe. Another gem of the master bedroom are the bi-fold doors leading out to a terrace area overlooking a picturesque stretch of the River Thames. There is a huge amount of secure storage and workshop area underneath the house.

### Features

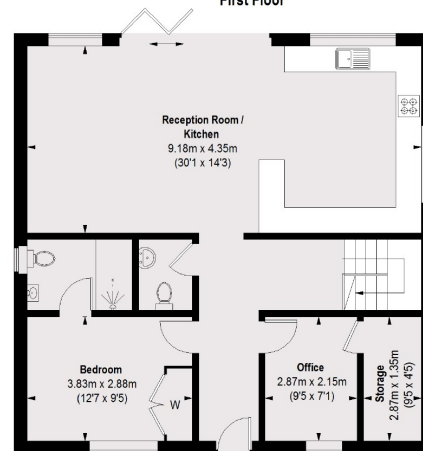
- Modern Built House
- Detached
- Private Mooring
- Huge Storage
- Elevated Views
- Fantastic Location



# Wheatleys Eyot, Sunbury-On-Thames, TW16



First Floor



Ground Floor

TOTAL APPROX. FLOOR AREA = 1838 SQ. FT. (170.78 SQ. M.)  
BALCONY = 77 SQ. FT. (7.2 SQ. M.)

## Contact

To arrange a viewing call our office on the number below or visit our website.



Energy Rating: C. We aim to make our particulars both accurate and reliable. However they are not guaranteed; nor do they form part of an offer or contract. If you require clarification on any points then please contact us, especially if you're traveling some distance to view. Please note that appliances and heating systems have not been tested and therefore no warranties can be given as to their good working order.

