



## Portsmouth Road, KT6

£539,950

A bright and spacious two double bedroom apartment set in this lift serviced riverside block with river facing balcony and no onward chain.

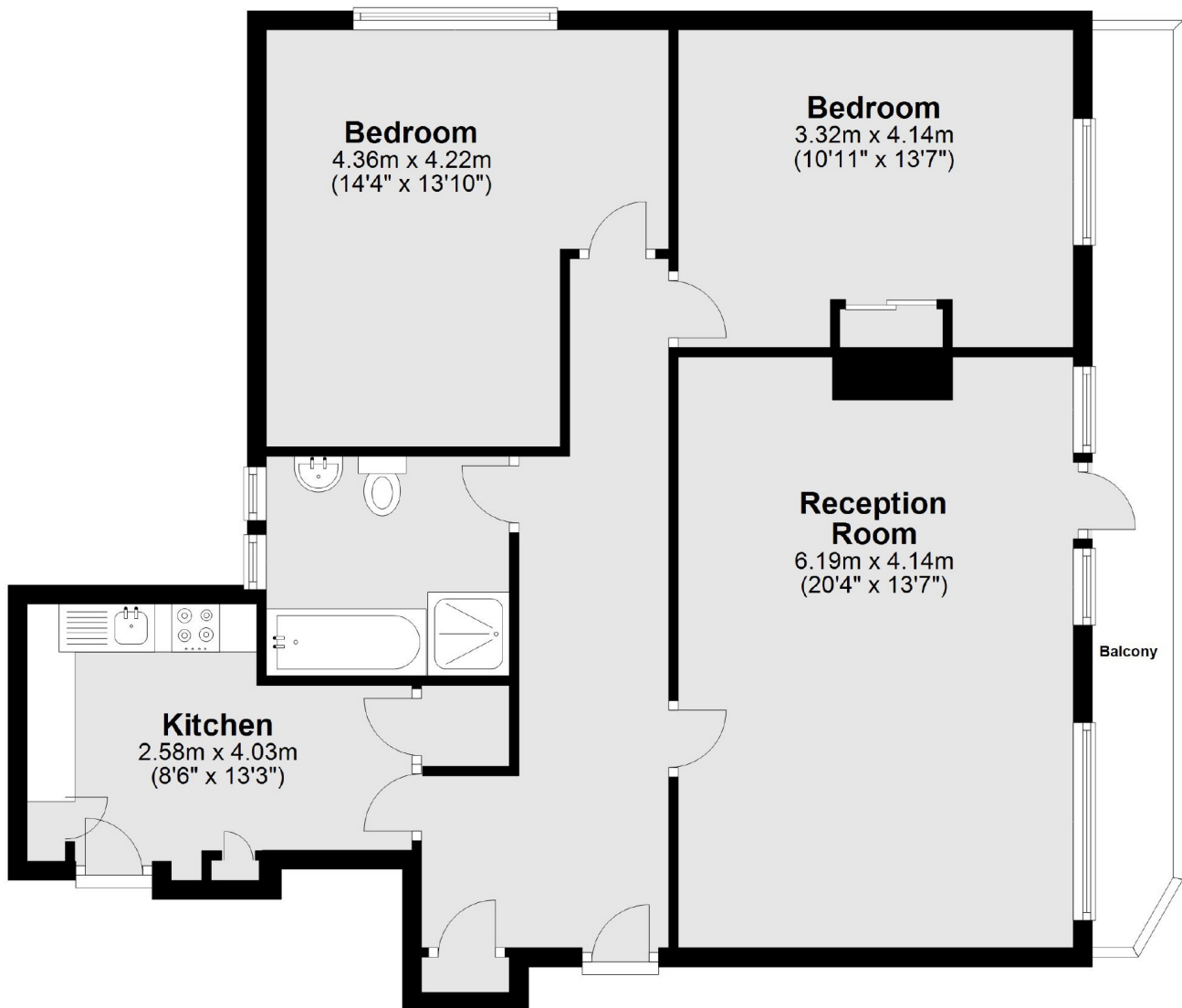
Portsmouth Road runs parallel to The Thames between Surbiton and Kingston with good transport links.

### Features

- Spacious Apartment
- Two Double Bedrooms
- River Facing
- Private Balcony
- Lift Service
- Extended Lease

Portsmouth Road,  
Surbiton, KT6

## First Floor



Total area: approx. 87.3 sq. metres (939.7 sq. feet)

### Contact

To arrange a viewing call our office on the number below or visit our website.



Energy Rating: C. We aim to make our particulars both accurate and reliable. However they are not guaranteed; nor do they form part of an offer or contract. If you require clarification on any points then please contact us, especially if you're traveling some distance to view. Please note that appliances and heating systems have not been tested and therefore no warranties can be given as to their good working order.