



Lendy Place, TW16

£549,950



A stunning two double bedroom apartment with full width private balcony overlooking the river set in this exclusive gated development with lift

There is a stylish kitchen, open plan onto dining area and living room with three sets of french doors onto a private river facing balcony. The principal bedroom has full height built-in wardrobes and beautiful en-suite, there is a second double bedroom and family bathroom.

Lendy Place is a modern built gated development by the Thames in the village of Sunbury-Upon-Thames.

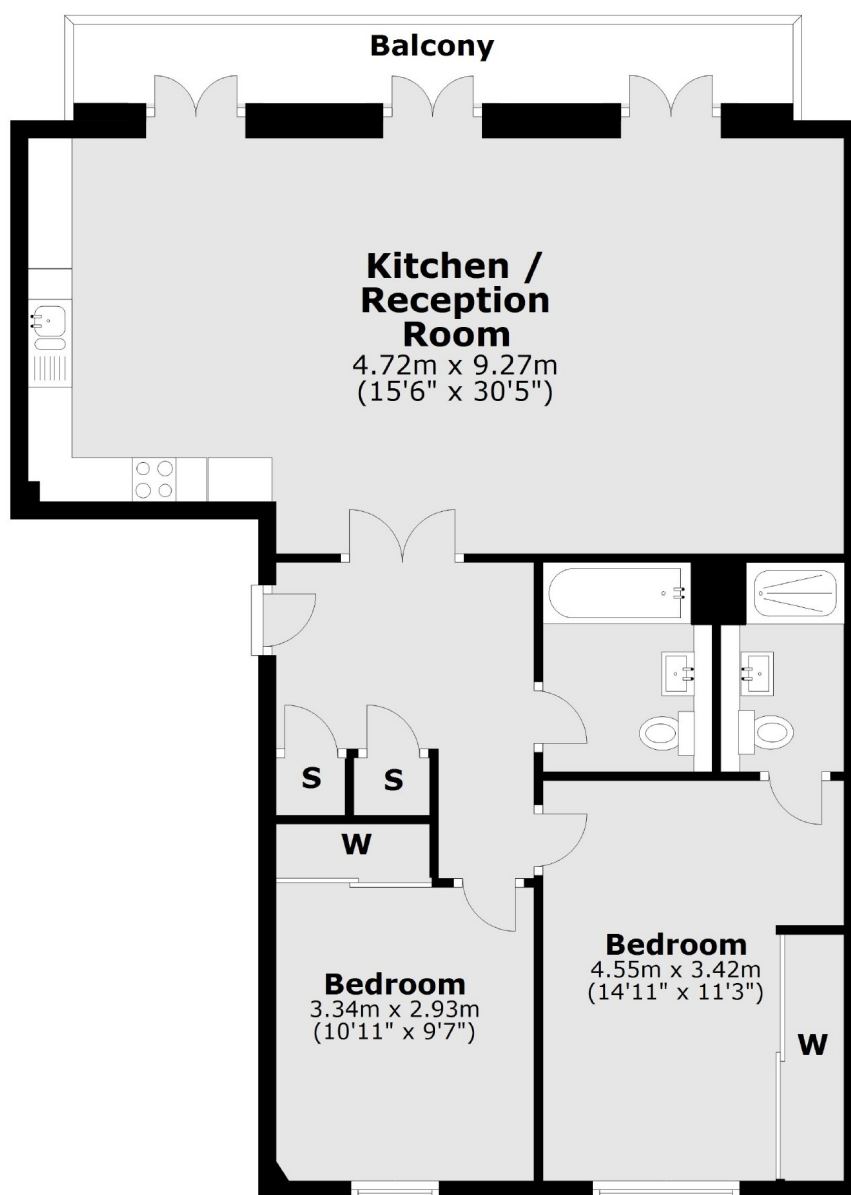
Features

- Beautiful Apartment
- Bright and Spacious
- Two Double Bedrooms
- River Facing Balcony
- Lift Service
- No Onward Chain



Lendy Place, Sunbury-On-Thames, TW16

First Floor



Total area: approx. 88.7 sq. metres (955.1 sq. feet)

Contact

To arrange a viewing call our office on the number below or visit our website.



Energy Rating: B. We aim to make our particulars both accurate and reliable. However they are not guaranteed; nor do they form part of an offer or contract. If you require clarification on any points then please contact us, especially if you're traveling some distance to view. Please note that appliances and heating systems have not been tested and therefore no warranties can be given as to their good working order.