



Staines-Upon-Thames, TW18

£374,999

The Canford is a deluxe riverside home set in this exclusive gated development on the River Thames between Staines and Chertsey, which has been beautifully designed and offers a stunning outlook of the river.

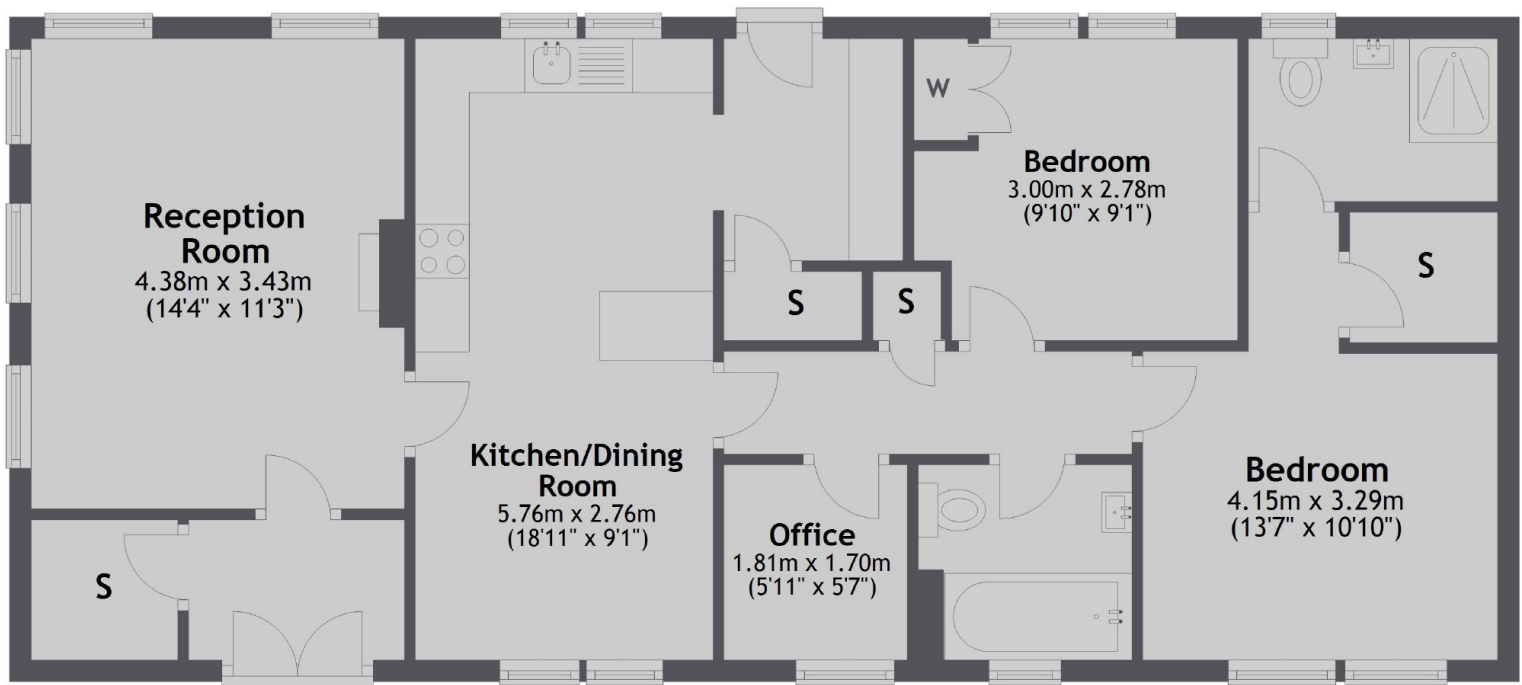
Thames Retreat is located on Chertsey Lane with easy access to main transport links.

Features

- Riverside Home
- Beautifully designed
- Two double bedrooms
- Large living space
- Mooring
- Gated development

Chertsey Lane, Staines-Upon-Thames, TW18

Ground Floor



Total area: approx. 78.2 sq. metres (841.2 sq. feet)

Contact

To arrange a viewing call our office on the number below or visit our website.



Energy Rating: . We aim to make our particulars both accurate and reliable. However they are not guaranteed; nor do they form part of an offer or contract. If you require clarification on any points then please contact us, especially if you're traveling some distance to view. Please note that appliances and heating systems have not been tested and therefore no warranties can be given as to their good working order.