



Twickenham Road, TW11

£350,000

Waterview

A rare opportunity, this well presented, spacious one double bedroom flat has breath taking views of The Thames at Teddington.

Twickenham Road runs parallel to The Thames at Teddington.





Accommodation is made up of entrance hall leading to a bright double reception room with access to the covered balcony and river views.

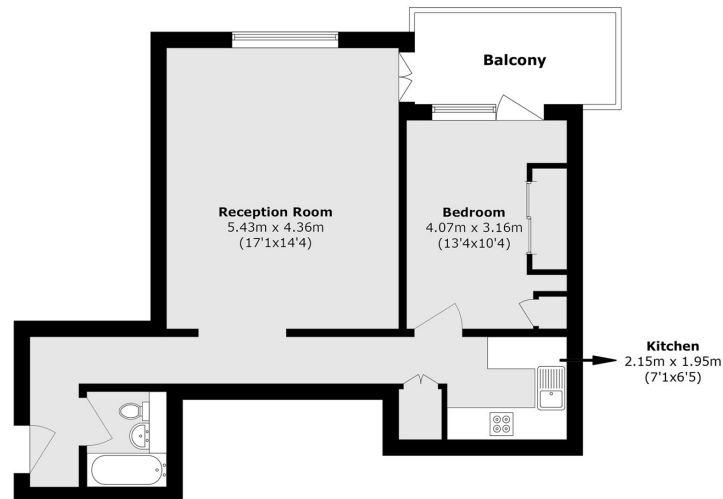
There is a stylish modern kitchen and a well appointed bathroom. The double bedroom has built-in wardrobes and has access to the balcony. The apartment comes with parking and there are well maintained communal gardens overlooking The Thames.

Features

- Spacious Apartment
- Stunning Views
- Private Balcony
- Well Presented
- No Chain
- Good Value



Twickenham Road, Teddington, TW11



Total area (approx.): 53.7 sq. m (578.0 sq. ft)

Balcony area (approx.): 6.5 sq. m (70.1 sq. ft)

Contact

To arrange a viewing call our office on the number below or visit our website.



Energy Rating: C. We aim to make our particulars both accurate and reliable. However they are not guaranteed; nor do they form part of an offer or contract. If you require clarification on any points then please contact us, especially if you're traveling some distance to view. Please note that appliances and heating systems have not been tested and therefore no warranties can be given as to their good working order.



MARLOW HOUSE