



Hythe End Road, TW19
£1,400,000

Waterview


OFFERS IN EXCESS OF, A stunning, newly refurbished family home with stylish open plan interiors on this picturesque stretch of The Thames opposite Runnymede with a 55ft private mooring.

Hythe End Road runs parallel to The Thames close to the village of Wraysbury.





Accommodation is made up of a large entrance hall leading to an impressive 32ft open plan living space which incorporates a sleek modern kitchen with central island and large reception area with great views of the river from full width folding doors to garden. There is a further generous room with dining and living areas. There is also a utility room and W.C On this level.

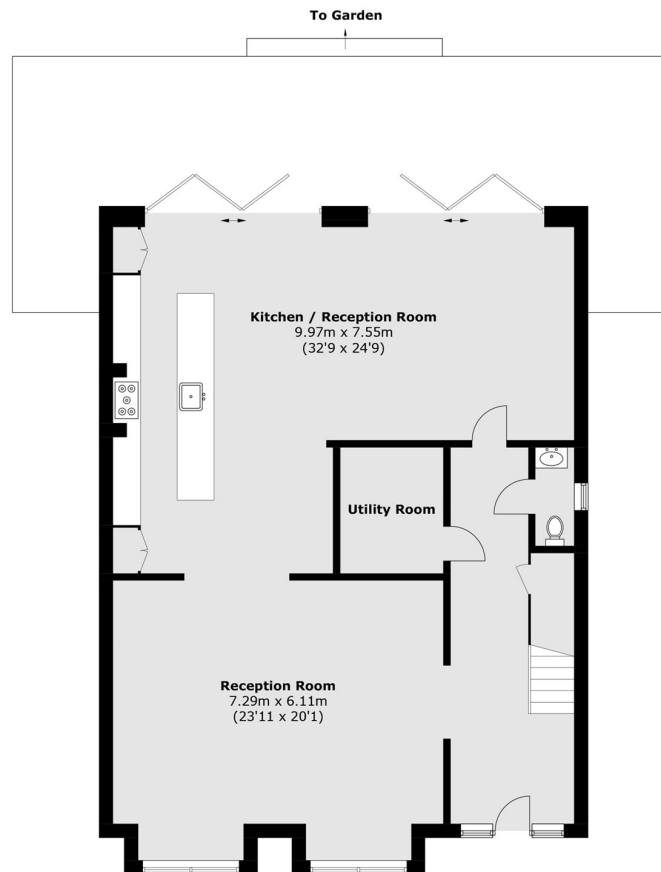
Upstairs the principal suite has a luxury en-suite and folding doors to a full width, river facing balcony with unrivalled views of the river. There are three further generous double bedrooms, one with access to the river balcony, and two further high quality family bathrooms on this level. To the front the driveway has off street parking for several cars. To the riverside a pretty, south facing lawned garden leads to the river with 55ft of frontage and mooring with an inlet for a small day boat.

Features

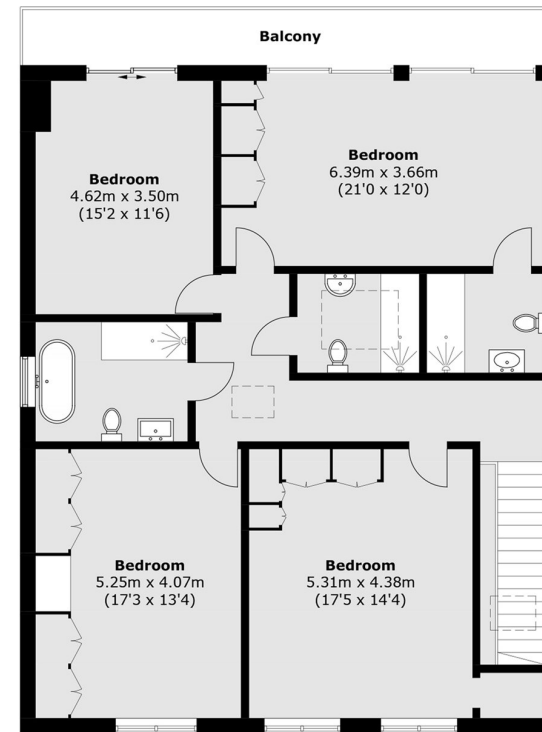
Stunning Home
Newly Refurbished
Four Double bedrooms
Fantastic views
South Facing
55ft Mooring



Hythe End Road, Wraysbury, TW19



Ground Floor



First Floor

Total area (approx.): 263.9 sq. m (2,840.6 sq. ft)
Balcony (approx.): 11.6 sq. m (124.9 sq. ft)

Contact

To arrange a viewing call our office on the number below or visit our website.



Energy Rating: C. We aim to make our particulars both accurate and reliable. However they are not guaranteed; nor do they form part of an offer or contract. If you require clarification on any points then please contact us, especially if you're traveling some distance to view. Please note that appliances and heating systems have not been tested and therefore no warranties can be given as to their good working order.

