



The Creek, TW16  
£710,000



A charming two/three bedroom riverside home backing onto this idyllic backwater of The Thames in this rural setting.

The Creek is a riverside road running parallel to The Thames close to the village of Sunbury.





Accommodation is made up of entrance hall leading to an open plan, country style kitchen with Aga which in turn opens onto a bright and spacious living room with solid oak floors, feature fireplace, dining area and two sets of French doors to garden. There are two double bedrooms and a family bathroom. Stairs lead to a first floor third bedroom with limited head height.

To the rear, a newly decked entertaining area overlooks the pretty south facing garden which backs onto the river with 30ft of frontage and views of the meadow beyond. To the front the gravel driveway has parking for several cars.

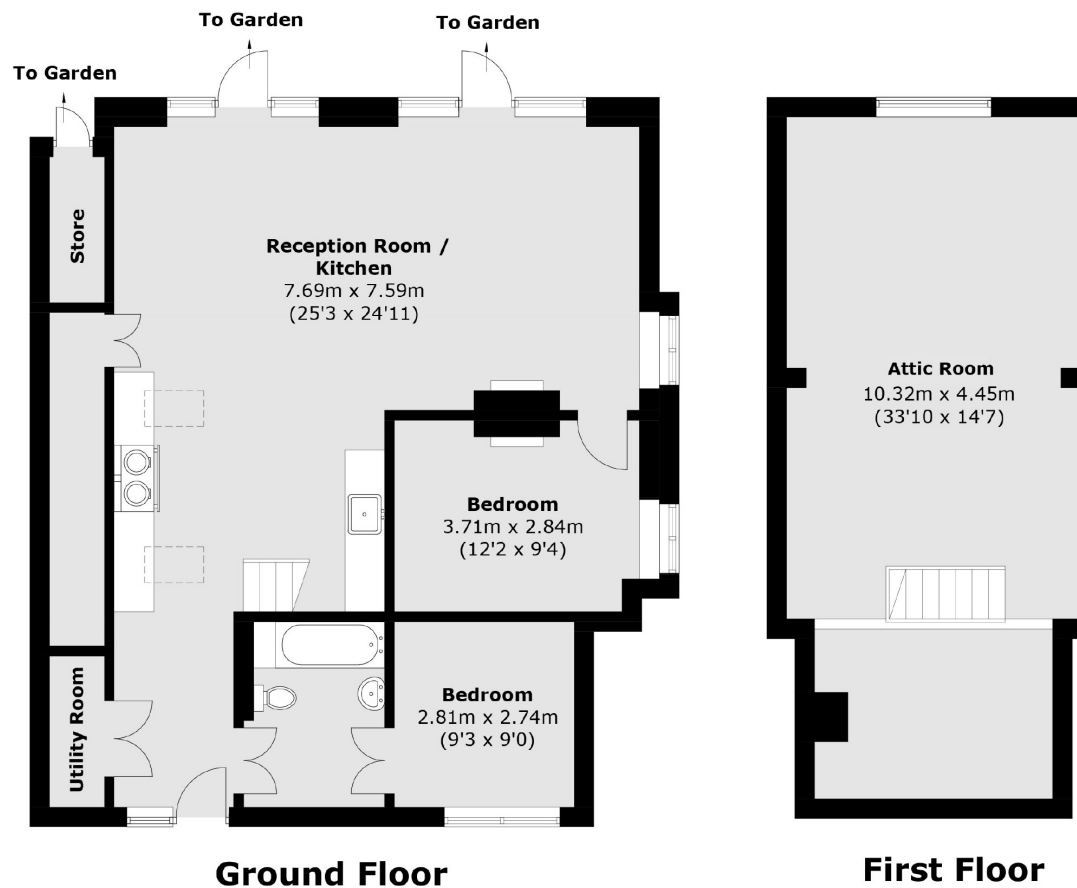
### Features

Charming Home  
River Setting  
South Facing  
Beautifully Presented  
No Chain  
Off Street Parking





# The Creek, Sunbury-on-Thames, TW16



Total area (approx.): 132.5 sq. m (1426.2 sq. ft)  
(Excluding Store)

## Contact

To arrange a viewing call our office on the number below or visit our website.



Energy Rating: C. We aim to make our particulars both accurate and reliable. However they are not guaranteed; nor do they form part of an offer or contract. If you require clarification on any points then please contact us, especially if you're traveling some distance to view. Please note that appliances and heating systems have not been tested and therefore no warranties can be given as to their good working order.



