



York Place, SW11

£807 Per week

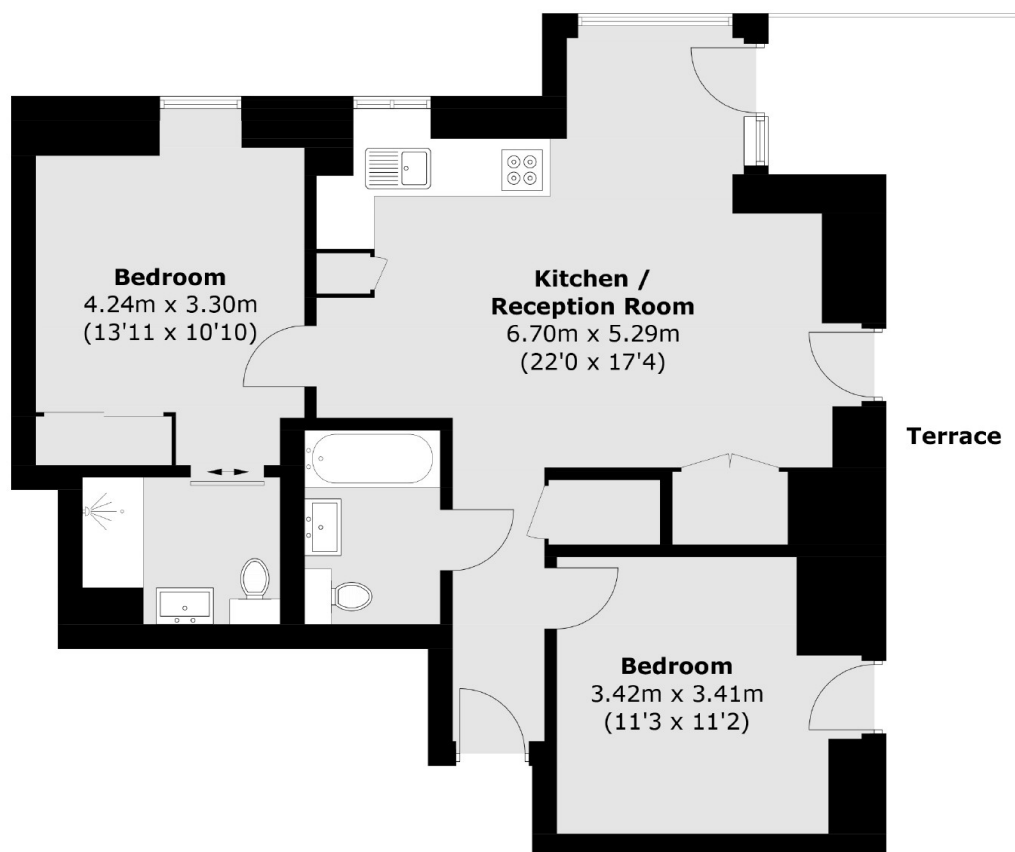
A stunning two bedroom, two bathroom apartment in a brand new development in Battersea (Coda Residences).

Coda Residences is located in the heart of Battersea with remarkable transport links such as the Uber Boat by Thames Clippers and Clapham Junction with access to Gatwick Airport.

Features

- Two Bedrooms
- Two Bathrooms
- 24hr Concierge
- Private Balcony
- Gym
- Furnished

York Place, London, SW11



Sixth Floor

Total area (approx.): 69.5 sq. m (748.1 sq. ft)
Terrace: 19.8 sq. m (213.1 sq. ft)