



## York Place, SW11

£1,075 Per week

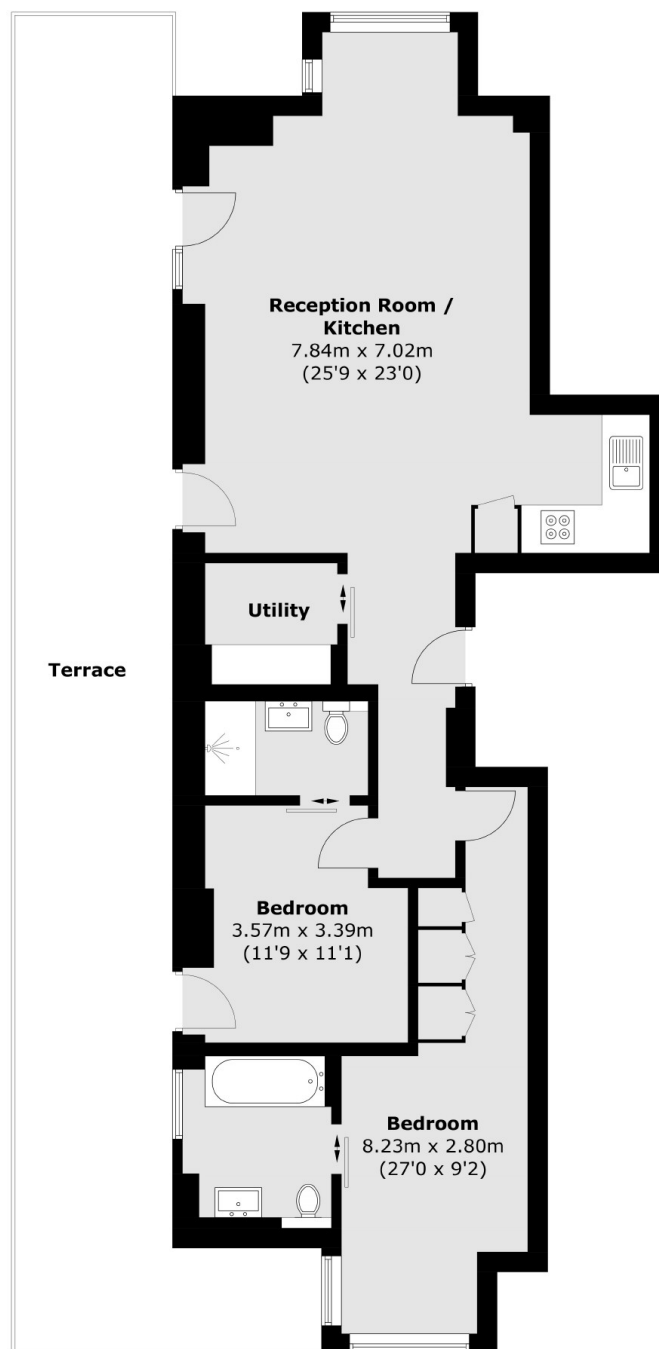
A stunning two bedroom, two bathroom apartment in a brand new development in Battersea (Coda Residences).

Coda Residences is located in the heart of Battersea with remarkable transport links such as the Uber Boat by Thames Clippers and Clapham Junction with access to Gatwick Airport.

### Features

- Two Bedrooms
- Two Bathrooms
- 24hr Concierge
- Private Balcony
- Gym
- Furnished

# York Place, London, SW11



## Eighteenth Floor

Total area (approx.): 89.3 sq. m (961.2 sq. ft)  
Terrace: 51.1 sq. m (550.0 sq. ft)

# Dexters

Chelsea Harbour  
5 Design Centre East  
London  
SW10 OXF

020 7590 9515

Energy Rating: B. We aim to make our particulars both accurate and reliable. However they are not guaranteed; nor do they form part of an offer or contract. If you require clarification on any points then please contact us, especially if you're traveling some distance to view. Please note that appliances and heating systems have not been tested and therefore no warranties can be given as to their good working order.

 **RICS** | Regulated  
Estate Agent  
and Letting Agent

[dexters.co.uk](https://www.dexters.co.uk)