



The Island, KT7
£935,000

Waterview


A charming three bedroom timber built home overlooking The Thames on this sought after private island in Thames Ditton.

Thames Ditton Island is a private island accessed by a foot bridge on The Thames within a short walk of the village.





Accommodation is made up of a bright and spacious open plan living area overlooking the river with reception area, dining space and kitchen with central island.

The principal double bedroom has built in wardrobes and an en-suite shower room, there are two further bedrooms and a family bathroom. Within the garden there is an annexe with a double bedroom, study and en-suite shower room.

To the riverside there is a south west facing, decked garden with 50ft private mooring.

Features

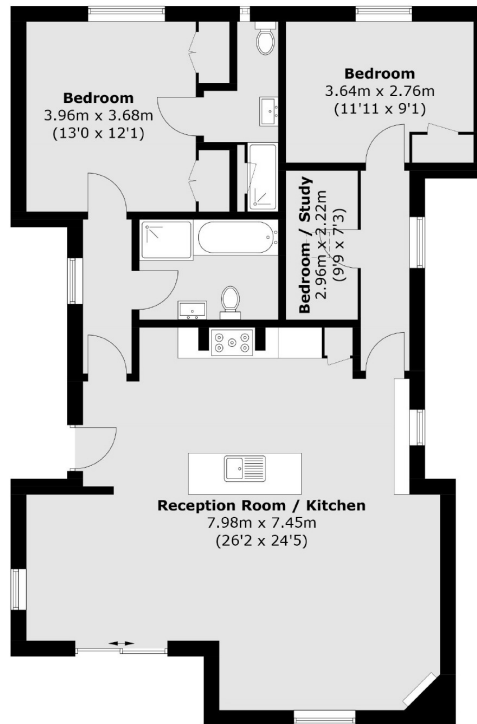
Detached House
Three Bedrooms
Separate Annex
50ft Mooring
South West Facing
Private Island



The Island, Thames Ditton, KT7



(Not Shown In Actual Location / Orientation)



Ground Floor

Total area (approx.): 95.1 sq. m (1,023.6 sq. ft)
Studio : 23.2 sq. m (249.7 sq. ft)

Contact

To arrange a viewing call our office on the number below or visit our website.



Energy Rating: E. We aim to make our particulars both accurate and reliable. However they are not guaranteed; nor do they form part of an offer or contract. If you require clarification on any points then please contact us, especially if you're traveling some distance to view. Please note that appliances and heating systems have not been tested and therefore no warranties can be given as to their good working order.

