



The Island, KT7  
£980,000

Waterview



A charming three bedroom timber built home overlooking The Thames on this sought after private island in Thames Ditton.

Thames Ditton Island is a private island accessed by a foot bridge on The Thames within a short walk of the village.







Accommodation is made up of a bright and spacious open plan living area overlooking the river with reception area, dinning space and kitchen with central island.

The Principal double bedroom has a built in wardrobes and an en-suite shower room, there are two further bedrooms and a further shower room. Within the garden there is an annexe with a double bedroom and en-suite shower room, there are two further bedrooms and a family bathroom. To the riverside there is a south west facing, decked garden with 50ft private mooring.

Within the garden there is an annexe with double bedroom and en-suite with a further study/home office.

### Features

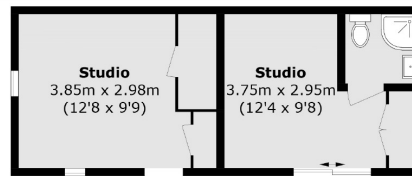
Detached House  
Three Bedrooms  
Separate Annex  
50ft Mooring  
South West Facing  
Private Island



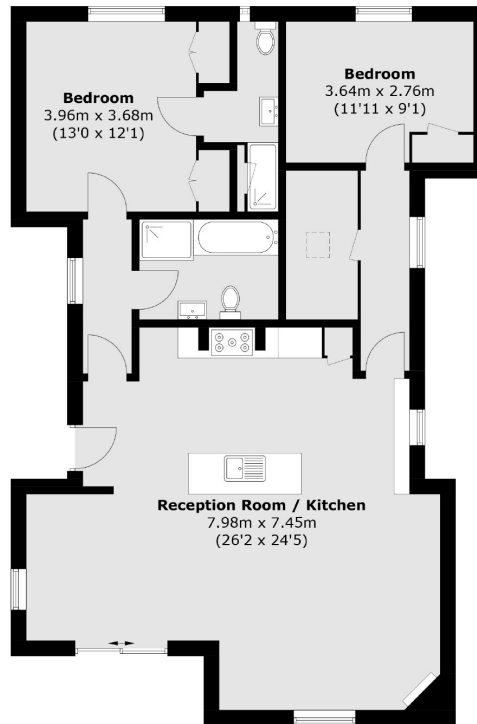




# The Island, , KT7



(Not Shown In Actual Location / Orientation)



## Ground Floor

Total area (approx.): 95.1 sq. m (1,023.6 sq. ft)  
Studio : 23.2 sq. m (249.7 sq. ft)

## Contact

To arrange a viewing call our office on the number below or visit our website.



Energy Rating: . We aim to make our particulars both accurate and reliable. However they are not guaranteed; nor do they form part of an offer or contract. If you require clarification on any points then please contact us, especially if you're traveling some distance to view. Please note that appliances and heating systems have not been tested and therefore no warranties can be given as to their good working order.



