



Mallard Place, TW1

£550,000

Waterview



Offered with no onward chain is this spacious two bedroom first floor apartment situated on the banks of the river Thames and it benefits from having a garage, access to a communal swimming pool as well as riverside grounds and a share of the freehold.

Mallard Place is an award winning Span development on the river Thames off Strawberry Vale between Twickenham and Teddington town centres and is close to Strawberry Hill mainline station. There are also a number of excellent schools nearby.



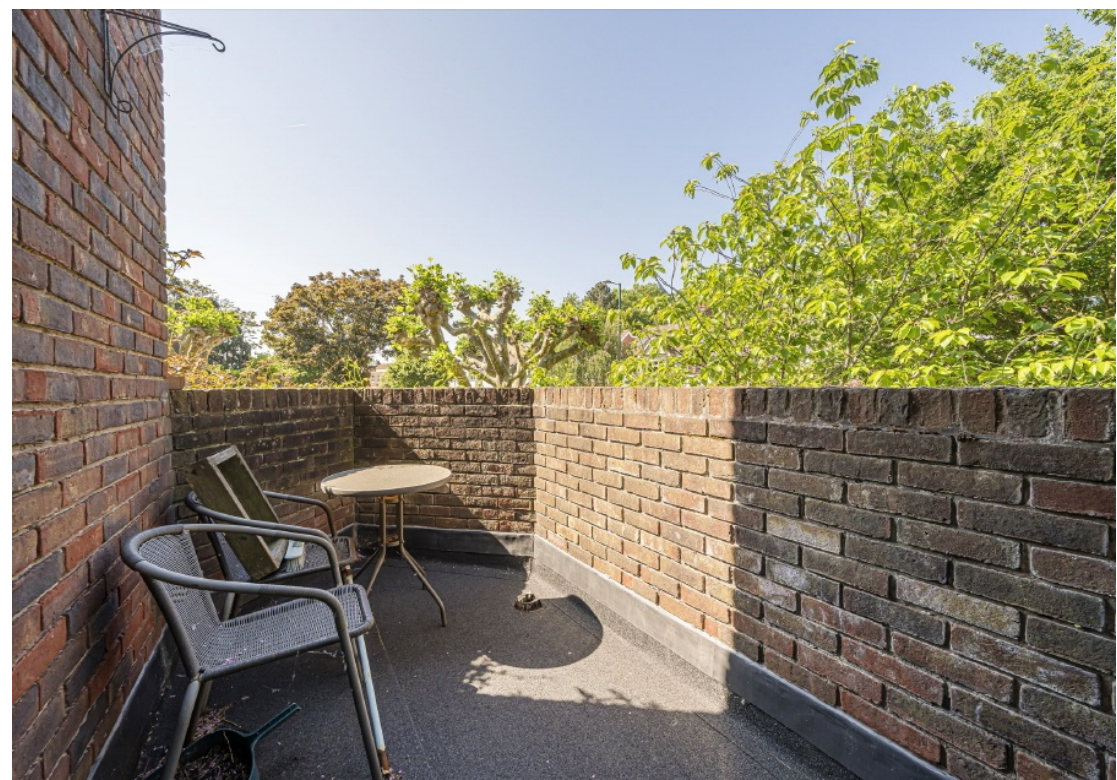




### Features

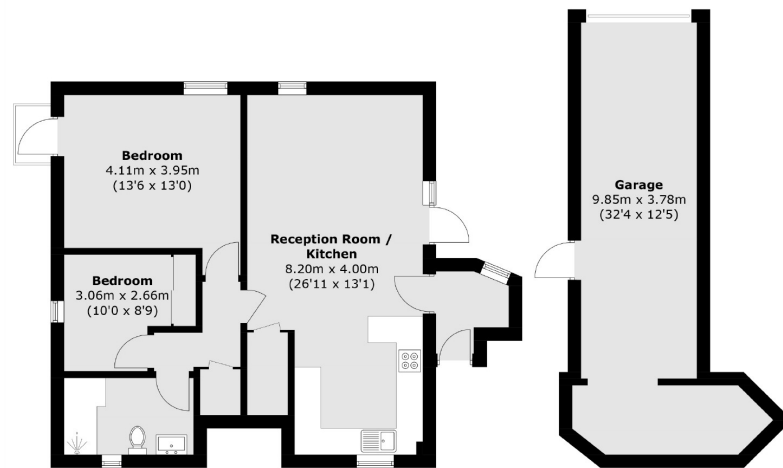
Two Bedrooms  
No Onward Chain  
Residents Parking  
Communal Swimming  
Pool  
Riverside  
Development  
Garage







# Mallard Place, , TW1



**Raised Ground Floor**

**(Not Shown In Actual  
Location / Orientation)**

Total area (approx.): 68.4 sq. m ( 736.2 sq. ft)  
(Excluding Balcony)  
Garage : 28.3 sq. m ( 304.6 sq. ft)

## Contact

To arrange a viewing call our office on the number below or visit our website.



Energy Rating: D. We aim to make our particulars both accurate and reliable. However they are not guaranteed; nor do they form part of an offer or contract. If you require clarification on any points then please contact us, especially if you're traveling some distance to view. Please note that appliances and heating systems have not been tested and therefore no warranties can be given as to their good working order.



