

York Place, SW11

£750 Per week

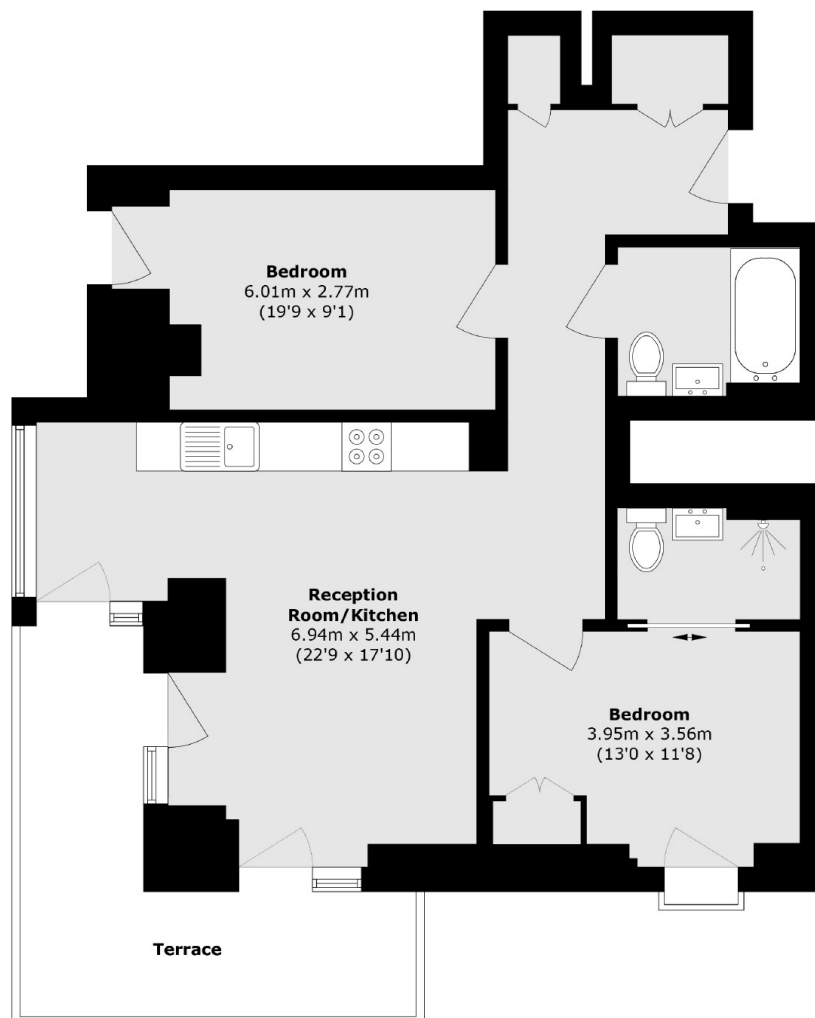
A stunning two bedroom, two bathroom apartment in a brand new development in Battersea (Coda Residences).

Coda Residences is located in the heart of Battersea wit

Features

Two Bedrooms
Two Bathrooms
24hr Concierge
Private Balcony
Gym
Furnished

York Place, London, SW11



Total area (approx.): 70.5 sq. m (758.8 sq. ft)
Terrace area (approx.): 13.4 sq. m (144.2 sq. ft)