



Victoria Avenue, KT8
£475,000

Waterview


A unique two double bedroom apartment on the top floor of this riverside block with spectacular, far reaching views of The Thames and beyond.

Victoria Avenue runs parallel to The Thames in West Molesey overlooking the river with easy reach of Hampton Court.





Accommodation is made up of entrance hall leading to a bright and spacious L-shaped double aspect reception room with dining area, impressive panoramic views and a west facing balcony. There is an integrated kitchen with larder.

There are two double bedrooms both benefitting from the far reaching views and a family bathroom.

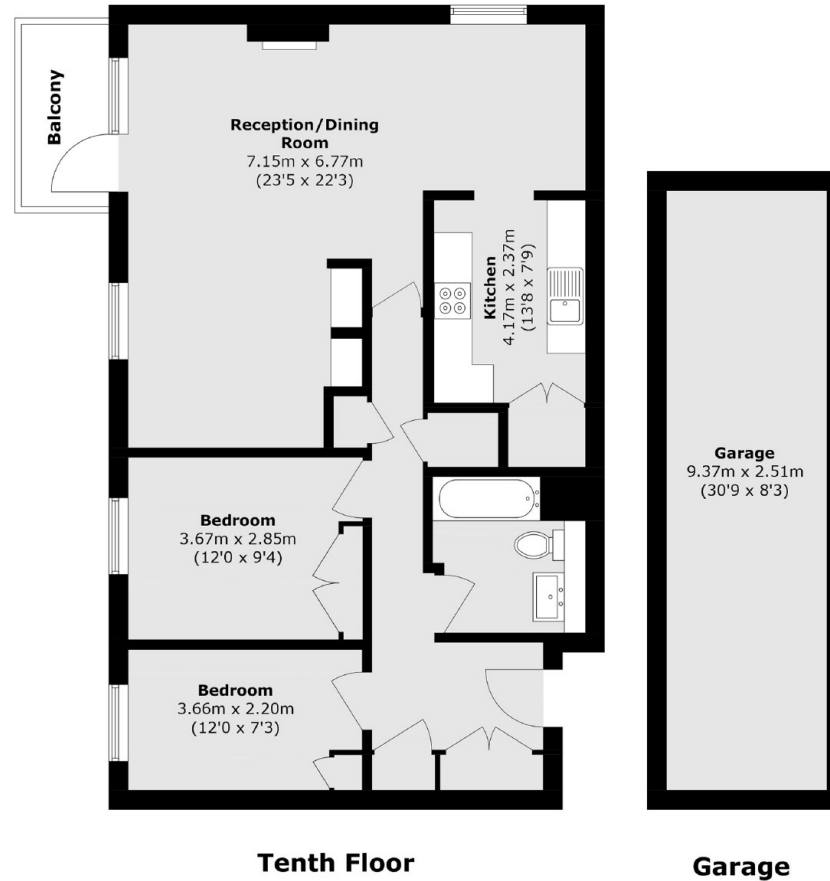
The apartment is in a lift serviced block with secure phone entry. There are pretty, well maintained resident's gardens and direct access onto Hurst Park and the river towpath. A private integral double length garage is included within a secure gated area which also contains additional parking for visitors

Features

- Top Floor Apartment
- Two Double Bedrooms
- Amazing Views
- Pretty Gardens
- River Access
- Balcony



Victoria Avenue, West Molesey, KT8



Total area (approx.): 83.9 sq. m (903.0 sq. ft)
Garage area (approx.): 23.5 sq. m (252.9 sq. ft)
Balcony area (approx.): 3.9 sq. m (41.9 sq. ft)

Contact

To arrange a viewing call our office on the number below or visit our website.



Energy Rating: C. We aim to make our particulars both accurate and reliable. However they are not guaranteed; nor do they form part of an offer or contract. If you require clarification on any points then please contact us, especially if you're traveling some distance to view. Please note that appliances and heating systems have not been tested and therefore no warranties can be given as to their good working order.

