



The Quadrangle, SW10

£900 Per week

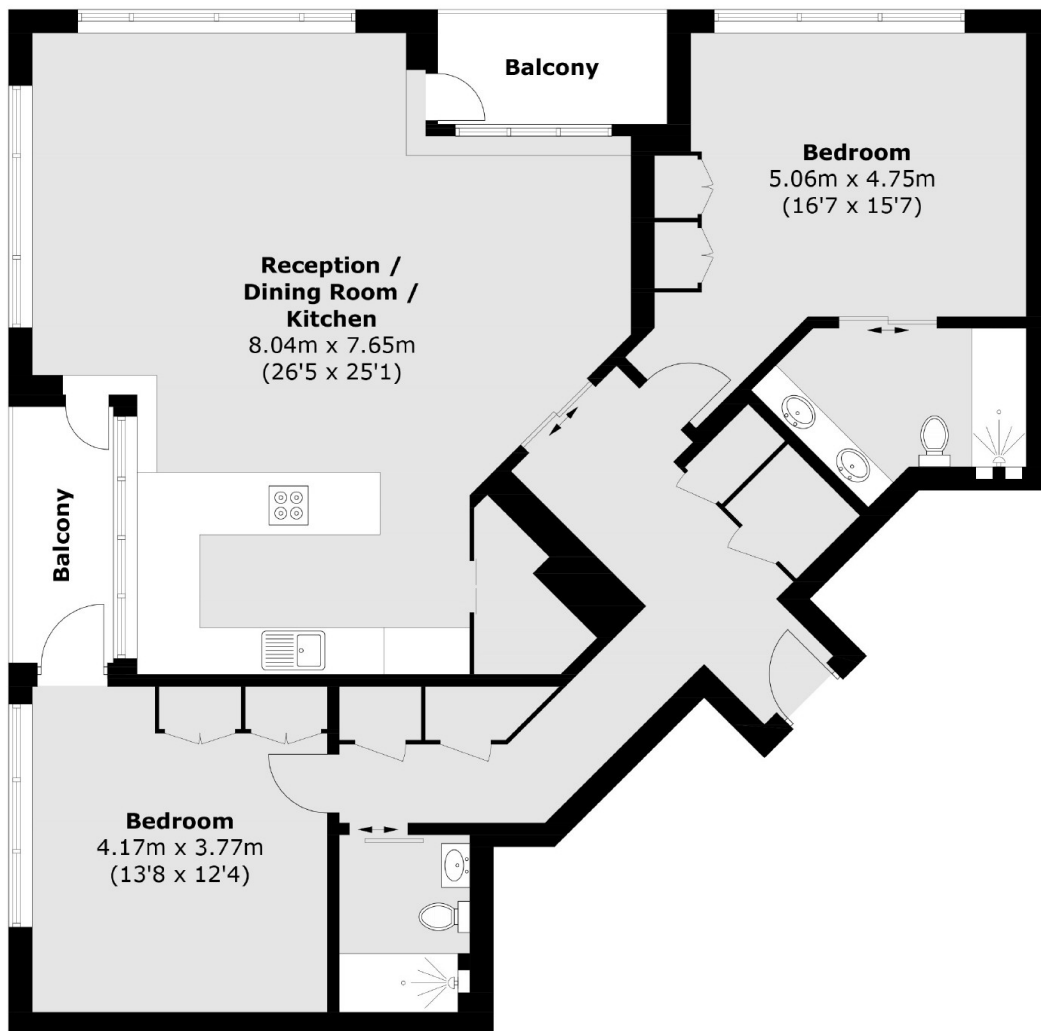
A stunning two bedroom, two bathroom apartment with two balconies and a fabulous open plan sitting room/kitchen/dining room. One secure underground parking space is included.

Chelsea Harbour is a famous and exclusive development by The Thames located off Lots Road Chelsea.

Features

- Two Double Bedrooms
- Two Bathrooms
- Open Plan Kitchen
- Private Balcony
- Porter
- Underground Parking Space

The Quadrangle, London, SW10



Third Floor

Total area (approx.): 116.3 sq. m (1,251.8 sq. ft)
Balcony (approx.): 8.4 sq. m (90.4 sq. ft)