



Wey Meadows, KT13
£750,000

Waterview


A fantastic three bedroom, timber built Scandi Hus set overlooking this picturesque stretch of The River Wey with 120ft of frontage within easy reach of Weybridge.

The Island is a small private, gated development backing onto the Wey at the top of Wey Meadows within a short distance of Weybridge town centre.





Accommodation is made up of a large 27' L-shaped open plan living space with triple aspect, integrated kitchen, dining area and doors onto the spacious riverside terrace. The spacious principal double bedroom has a range of built in wardrobes, en-suite shower room and river views. There are two further bedrooms a family bathroom and utility room.

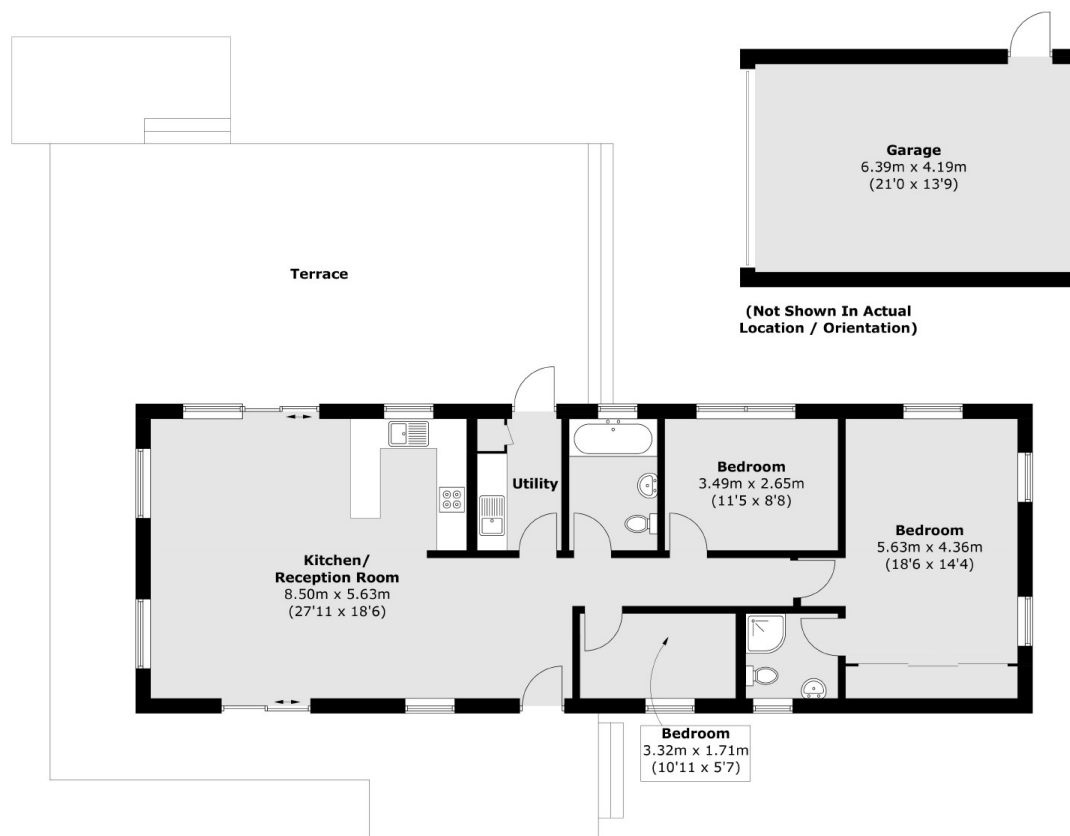
To the front of the house there is parking for two cars leading to a large garage/workshop. To the riverside a large tiered deck, perfect for entertaining, overlooks this pretty stretch of river with 120ft of frontage and lawned gardens.

Features

Scandi Hus
Three Bedrooms
Two Bathrooms
120ft River Frontage
Gated Development
Garage/Workshop



Wey Meadows, Weybridge, KT13



Total area (approx.): 99.1 sq. m (1,066.7 sq. ft)
Garage : 26.9 sq. m (289.5 sq. ft)
Terrace : 100.1 sq. m (1,077.5 sq. ft)

Contact

To arrange a viewing call our office on the number below or visit our website.



Regulated
Estate Agent
and Letting Agent

Energy Rating: E. We aim to make our particulars both accurate and reliable. However they are not guaranteed; nor do they form part of an offer or contract. If you require clarification on any points then please contact us, especially if you're traveling some distance to view. Please note that appliances and heating systems have not been tested and therefore no warranties can be given as to their good working order.

