

York Place, SW11

£825 Per week

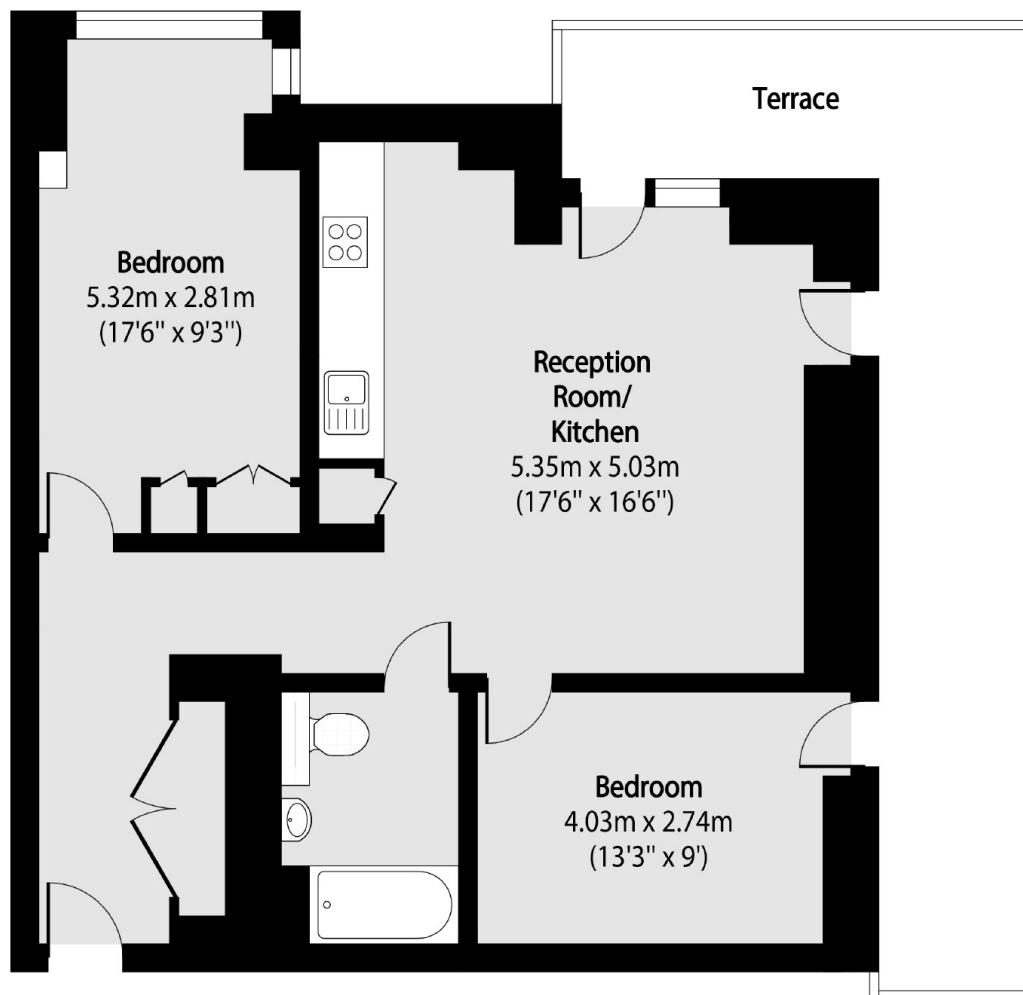
A two bedroom, one bathroom apartment in a brand new development in Battersea (Coda Residences).

Coda Residences is located in the heart of Battersea with remarkable transport links such as the Uber Boat by Thames Clippers and Clapham Junction with access to Gatwick Airport.

Features

Two Bedrooms
One Bath
24hr Concierge
Private Balcony
Gym
Furnished

York Place, London, SW11



Total area (approx): 71.54 sq m (770 sq. ft)

Terrace total area (approx): 21.92 sq m (235 sq. ft)