



Temple Gardens, TW18  
£1,175,000

Waterview  




A rare opportunity to purchase this beautiful, detached family home with a pretty, south facing lawned garden backing onto this picturesque quiet backwater of The Thames.

Temple Gardens is an exclusive residential road running parallel to The Thames between Staines-upon-Thames and Chertsey.





Accommodation is made up of a large double reception room with sliding doors to terrace and access to an integrated kitchen/breakfast room with marble worktops. There are three double bedrooms on the ground floor with the large principal suite having garden and river views with en-suite and a further family bathroom. On the first floor there is a further double bedroom/games room with W.C, and a covered balcony with stunning views.

To the front of the house there is a large paved driveway with parking for several cars and access to an integrated single garage. To the rear a large paved terrace, perfect for entertaining, overlooks the pretty, south facing lawned garden with a further riverside terrace overlooking the river, access to a floating pontoon mooring (35ft) of 60ft river frontage.

The house is offered with vacant possession and no onward chain.

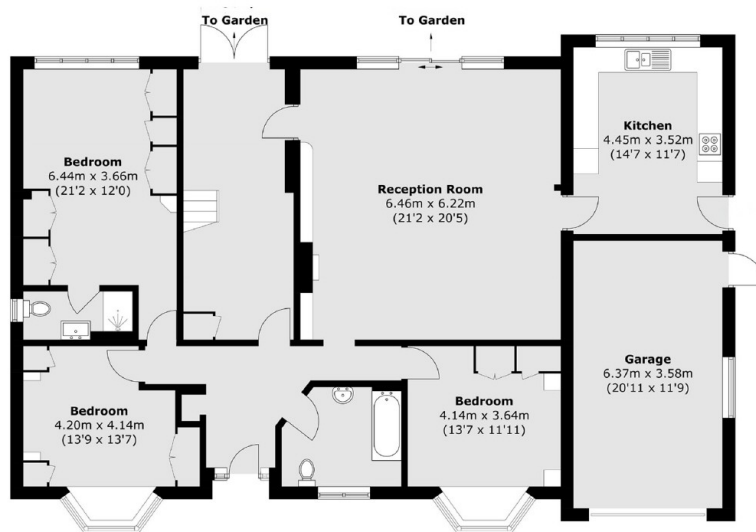
### Features

Riverside Home  
South Facing  
Pretty Gardens  
Scope To Modernise  
Private Mooring  
No Chain

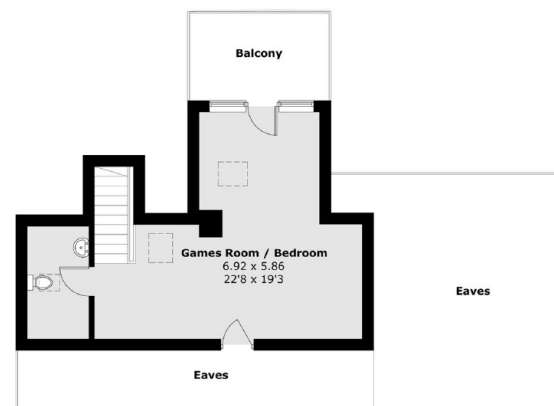




# Temple Gardens, Staines-upon-Thames, TW18



**Ground Floor**



**First Floor**

Total area (approx.): 180.1 sq. m (1,938.5 sq. ft)  
Garage: 22.7 sq. m (244.3 sq. ft)  
Total: 202.8 sq. m (2182.8 sq. ft)  
(Excluding Eaves)  
Balcony: 8.1 sq. m (87.2 sq. ft)

## Contact

To arrange a viewing call our office on the number below or visit our website.



Energy Rating: D. We aim to make our particulars both accurate and reliable. However they are not guaranteed; nor do they form part of an offer or contract. If you require clarification on any points then please contact us, especially if you're traveling some distance to view. Please note that appliances and heating systems have not been tested and therefore no warranties can be given as to their good working order.



