



Juniper Drive, SW18

£650 Per week

A spacious two bedroom apartment, located within this prestigious riverside development. Offering spacious living space and a private balcony with views over the River Thames, perfect for a professional couple or single person.

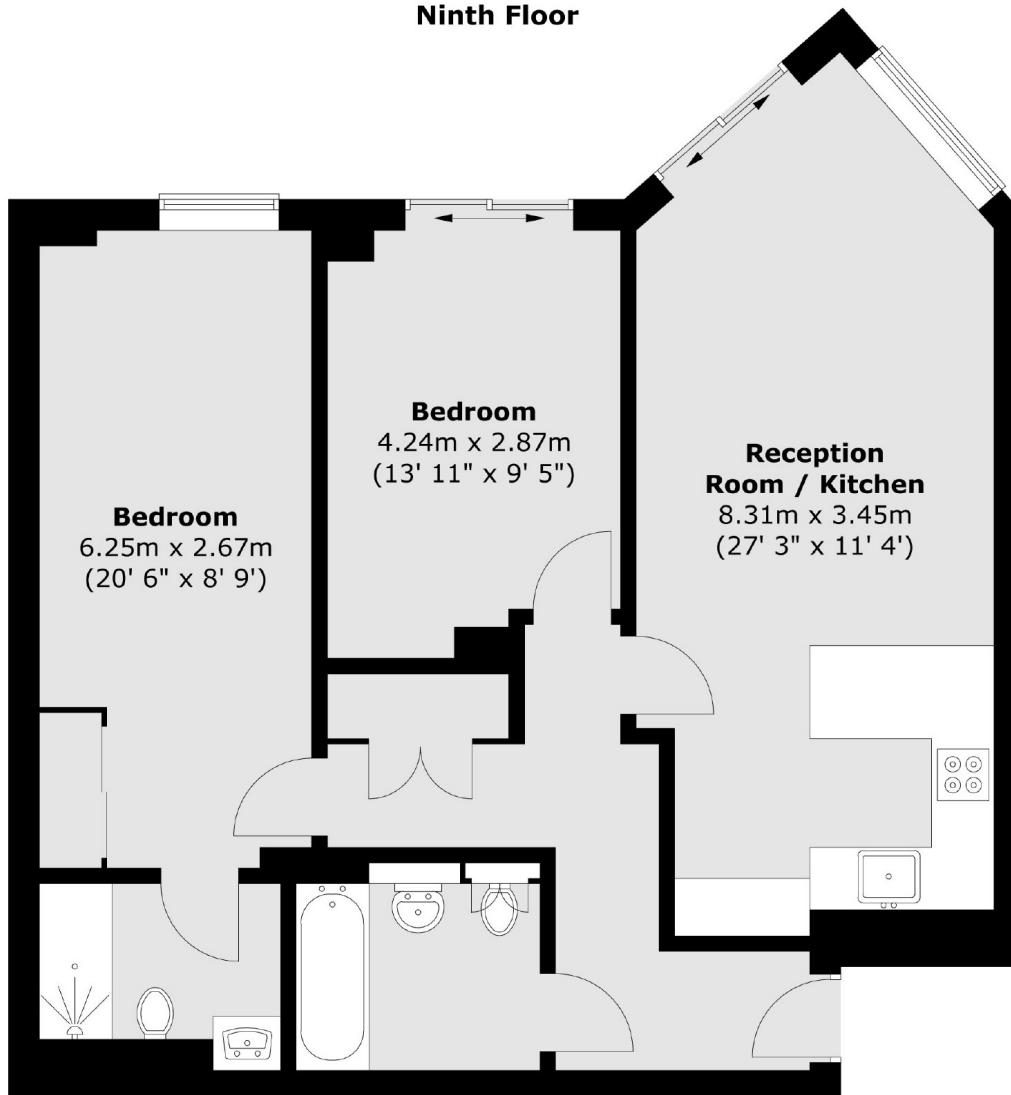
Juniper Drive is a clean and modern development with an on site Concierge and gym. Located within half a mile to Wandsworth Town station, and Clapham Junction station.

Features

- Two Bedrooms
- Parking Space
- Two Bathrooms
- Great Views
- Concierge
- Secure Lift Access

Juniper Drive, London, SW18

Ninth Floor



Total area (approx.) : 78.5 sq. m (845 sq. ft)