

## Juniper Drive, SW18

**£496** Per week

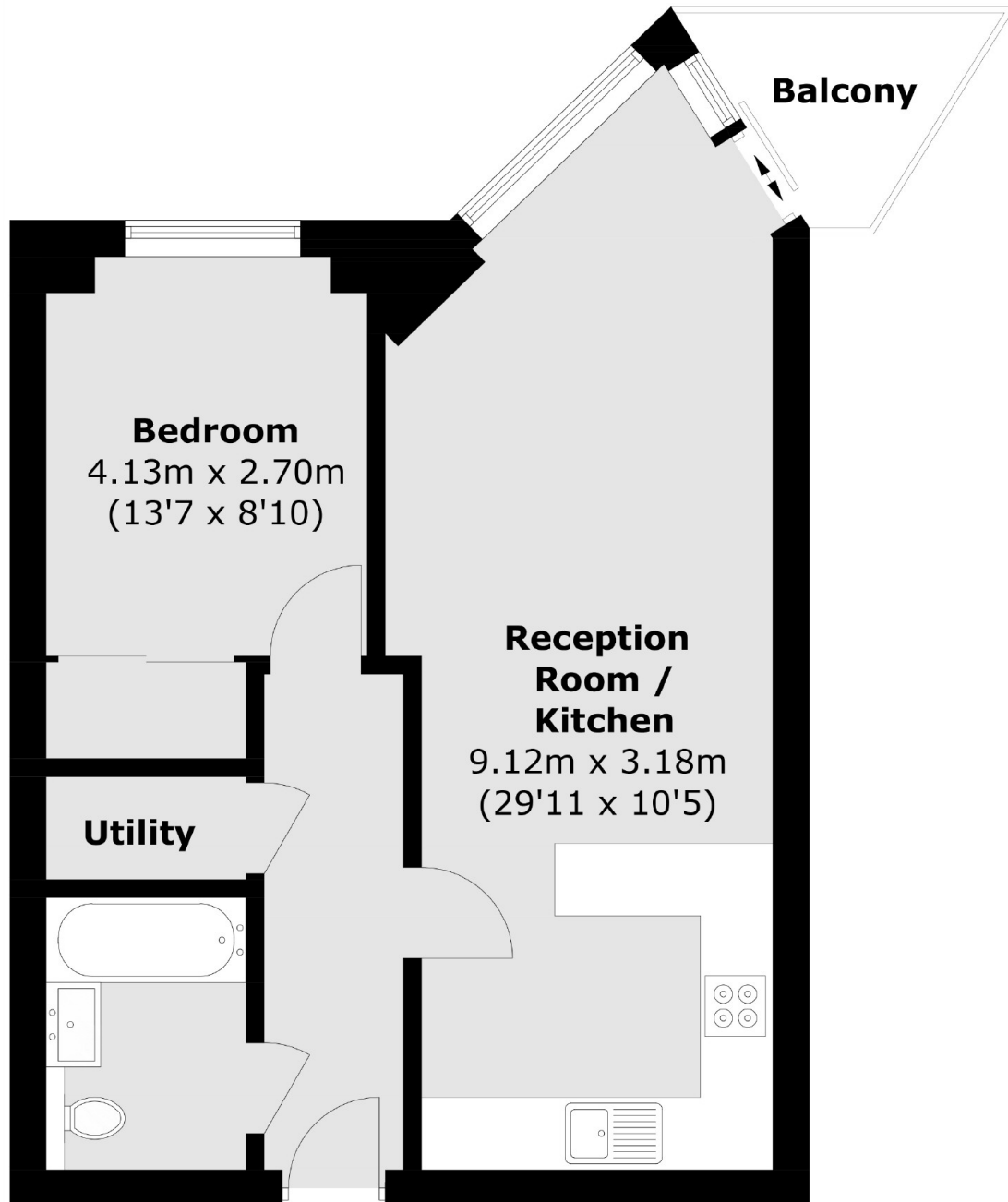
A contemporary one bedroom apartment, located within this prestigious riverside development. Offering spacious living space and a private balcony with views over the River Thames. The landlord is looking for single occupancy only.

Battersea Reach is an award-winning riverside development, located moments from the transport links of Wandsworth Town & Clapham Junction. Residents benefit from 24-hour concierge & an exclusive gym, as well as on-site amenities like Tesco Express, Young's Bar & Restaurant, Cake Boy Patisserie Café, a floating wellness centre, healthcare clinic & beauty salon.

### Features

- One Bedroom
- Private Balcony
- Parking Space
- Furnished
- 24hr Concierge
- Gym

# Juniper Drive, London, SW18



Total area (approx.): 47.4 sq. m (510.2 sq. ft)  
Balcony area : 2.9 sq. m (31.2 sq. ft)