



## Carlyle Court, SW10

£750 Per week

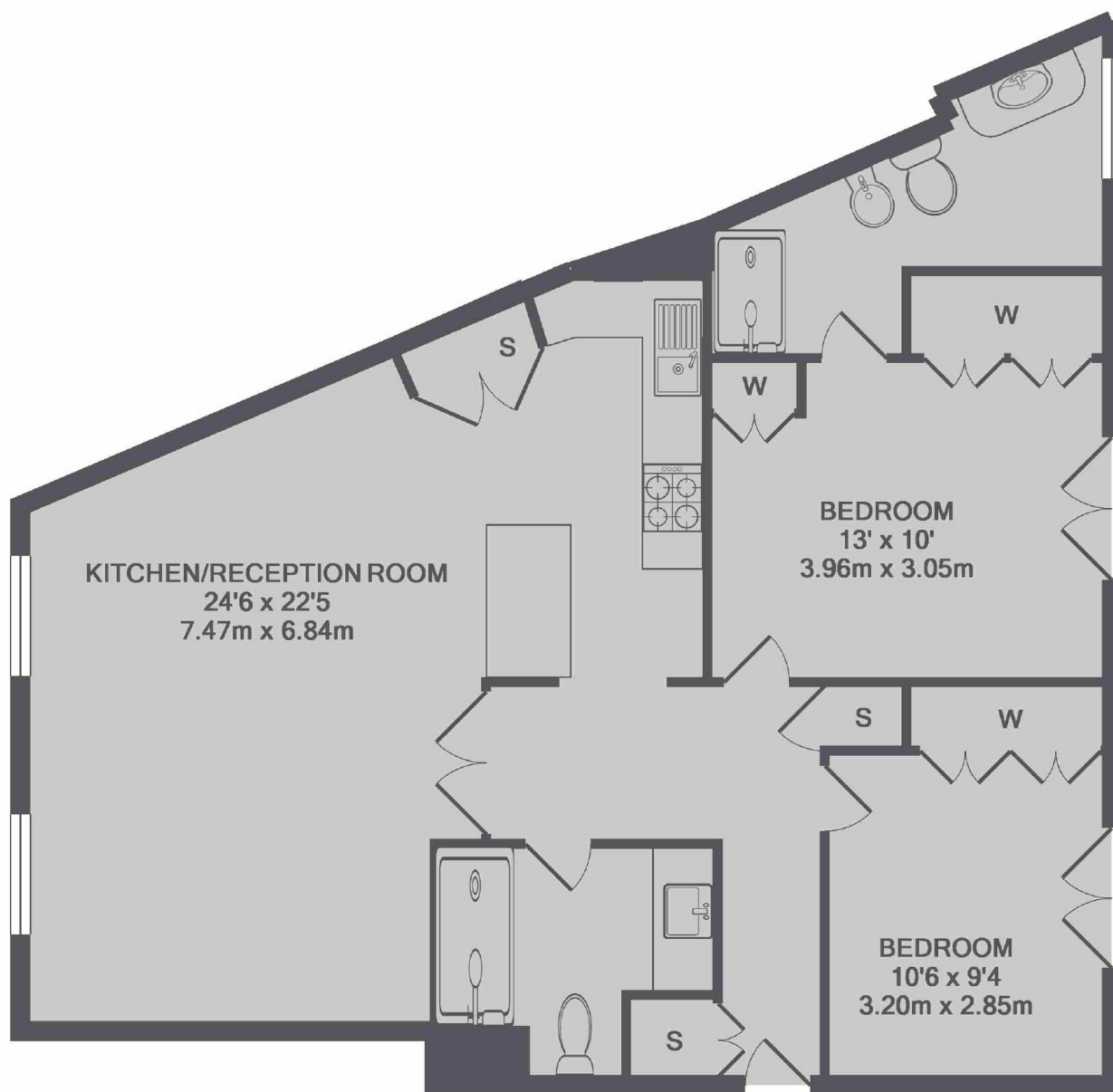
A two double bedroom, two bathroom property in Chelsea Harbour that comes with a porter and an underground parking space.

Chelsea Harbour is an exclusive development located next to the River Thames. Imperial Wharf railway station and river boats to the city are moments away.

### Features

- Two Double Bedrooms
- Two Bathrooms
- Lateral Apartment
- One Parking Space
- Porter
- Chelsea Harbour

# Carlyle Court, London, SW10



TOTAL APPROX. FLOOR AREA 921 SQ.FT. (85.5 SQ.M.)

## Dexters

Chelsea Harbour  
5 Design Centre East  
London  
SW10 OXF

020 7590 9515

Energy Rating: D. We aim to make our particulars both accurate and reliable. However they are not guaranteed; nor do they form part of an offer or contract. If you require clarification on any points then please contact us, especially if you're traveling some distance to view. Please note that appliances and heating systems have not been tested and therefore no warranties can be given as to their good working order.

 **RICS** | Regulated  
Estate Agent  
and Letting Agent

[dexters.co.uk](https://www.dexters.co.uk)