



Marina Place, KT1

£3,795 Per calendar month

This luxury two double bedroom riverside apartment, has everything you could wish for, a south facing terrace overlooking the river, secure underground parking, two bathrooms and concierge.

Marina Place is in a popular location with the River Thames on your doorstep. Hampton Wick mainline station is only 0.3 miles away with direct links to London Waterloo. Kingston Town Centre is also only 0.3 miles away with its many restaurants, local pubs and shops.

Features

- Two Double Bedrooms
- Two Bathrooms
- Modern Finish
- River Views
- Underground Parking
- Excellent Condition



Marina Place, KT1

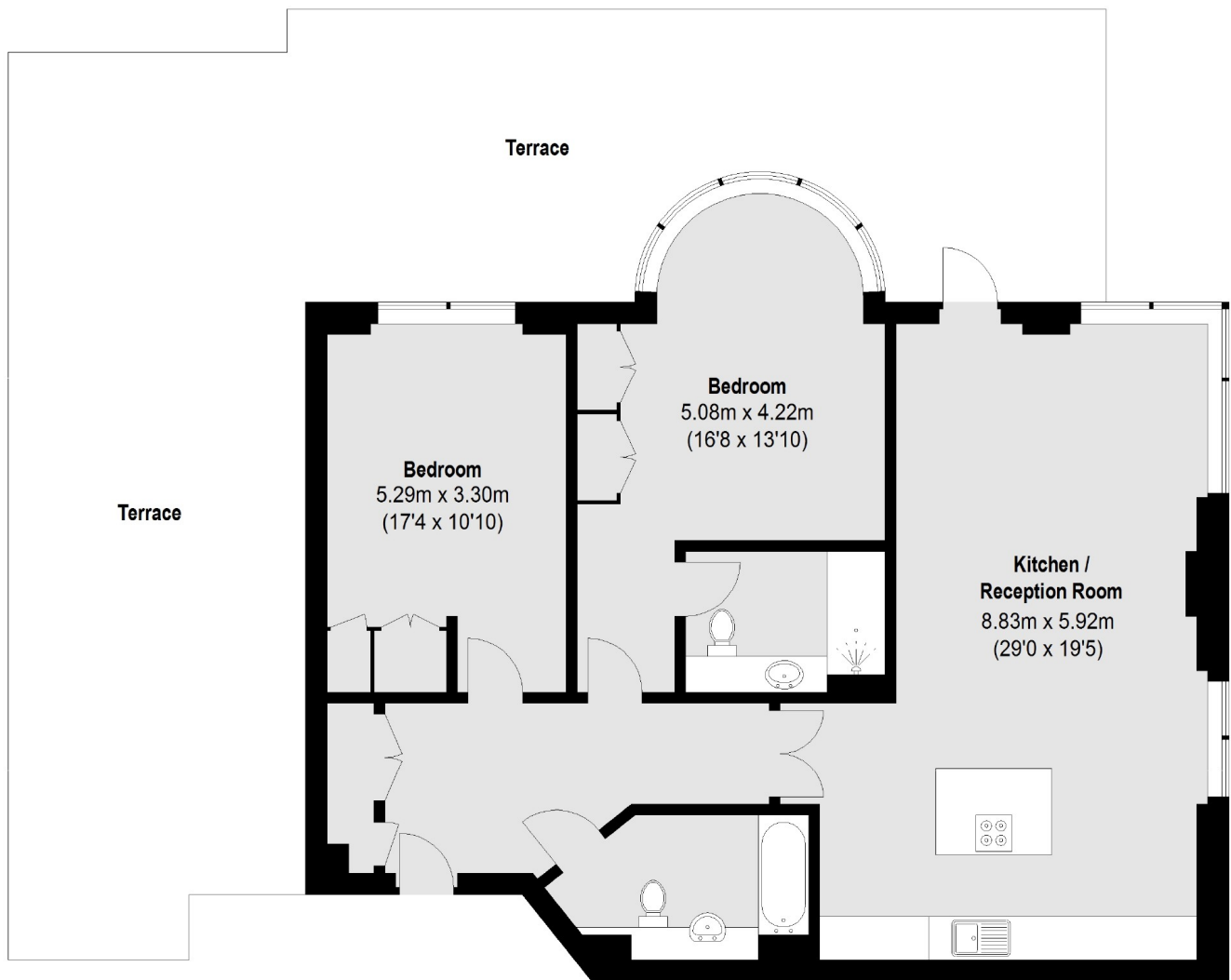
This luxury apartment offers over 1000 sq ft of living accommodation, consisting of a large entrance hall that leads onto the spacious dual aspect open plan living room, with a modern kitchen and patio doors onto the private south facing terrace with uninterrupted views of the River Thames.

There is a master bedroom with fitted wardrobes, and a modern en suite bathroom. The second bedroom is also a large double bedroom with fitted wardrobes, both bedrooms also have river views. There is also a bathroom and ample storage off the hallway.

The property is set within a private development that has secure underground parking, a private south facing terrace, and 24 hour concierge service.



Marina Place, Hampton Wick, KT1



Total area (approx.): 107.53 sq. m (1157 sq. ft)
Terrace: 89.99 sq. m (969 sq. ft)

Dexters

Teddington
61 High Street
Teddington
TW11 8HA
Lettings
020 8288 2900

Energy Rating: D. We aim to make our particulars both accurate and reliable. However they are not guaranteed; nor do they form part of an offer or contract. If you require clarification on any points then please contact us, especially if you're traveling some distance to view. Please note that appliances and heating systems have not been tested and therefore no warranties can be given as to their good working order.

 **RICS** | Regulated
Estate Agent
and Letting Agent

dexters.co.uk