



The Island, KT7
£899,950

Waterview


A rare opportunity to purchase a plot on this idyllic private island with the benefit of planning permission for a new 2,583 sq ft four bedroom house over two floors which overlooks The Thames.

Thames Ditton Island is located in the pretty village of Thames Ditton with a range of independent shops, pubs and restaurants, as well as train station with access to London within 35 minutes.





The existing house is a two bedroom single storey home with 614 sq ft of internal accommodation. The island is approached via a resident's only footbridge over the backwater with a path running centrally across the island.

To the front of the existing property there is an approx 36ft front garden and to the riverside a further garden with patio area overlooking the river and steps to a 31ft private mooring. Copies of the approved plans are available on Elmbridge Planning Website under 11, The Island, Elmbridge reference 2024/6018

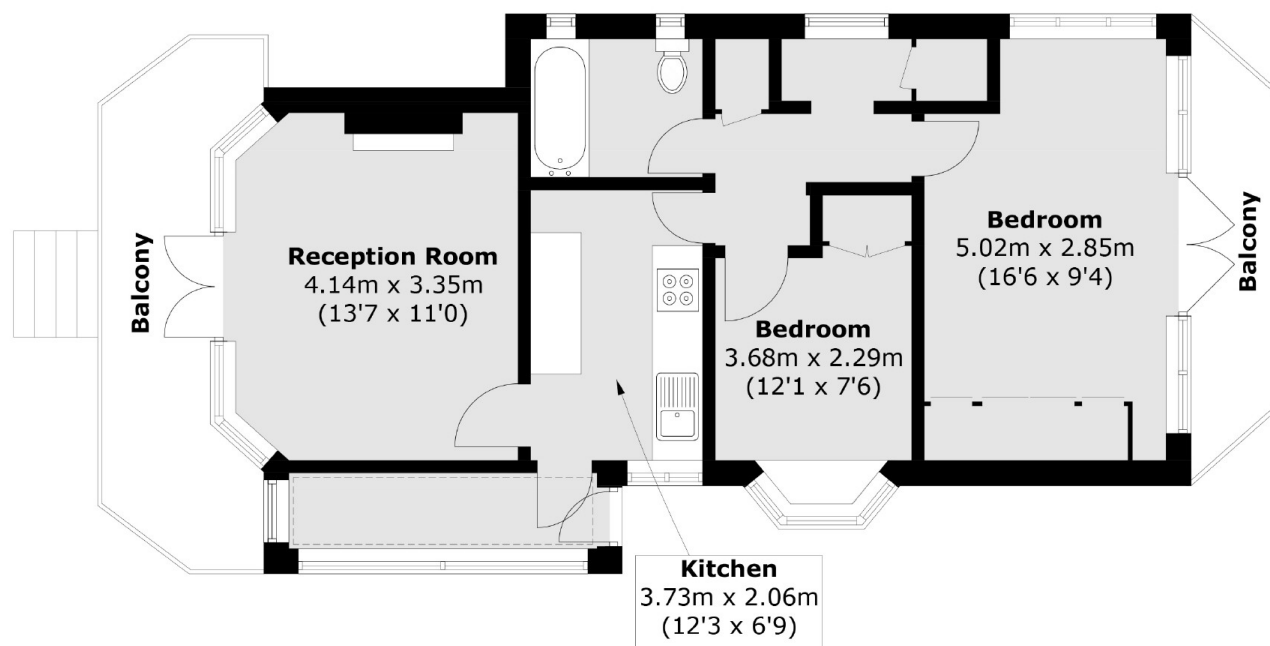
This is a great opportunity to build a dream family home.

Features

- Plot With Planning
- Private Island
- 31ft Mooring
- Rarely Available
- Main Thames
- Pretty Village Nearby



The Island, Thames Ditton, KT7



Total area (approx.) : 57.1 sq. m (614.6 sq. ft)
Balcony : 13.5 sq. m (145.3 sq. ft)

Contact

To arrange a viewing call our office on the number below or visit our website.



Energy Rating: F. We aim to make our particulars both accurate and reliable. However they are not guaranteed; nor do they form part of an offer or contract. If you require clarification on any points then please contact us, especially if you're traveling some distance to view. Please note that appliances and heating systems have not been tested and therefore no warranties can be given as to their good working order.

