



Buckingham Gardens, KT8

£769,950

With stunning uninterrupted meadow and river views, this beautiful light-filled end of terrace house occupies one of the largest plots on Hurst Park. With an attached, landscaped driveway and low maintenance, pretty gardens, this house represents easy living.

Buckingham Gardens is in close proximity to Hampton Court which offers a great selection of boutique cafés, restaurants and shops. Tescos and the Post Office are also close by. The house also has easy access to the Station with direct links into Waterloo.

Features

Beautiful Riverside Home
Three Double Bedrooms
End of Terrace
River Views
Beautifully Presented
Private Driveway



Buckingham Gardens, KT8

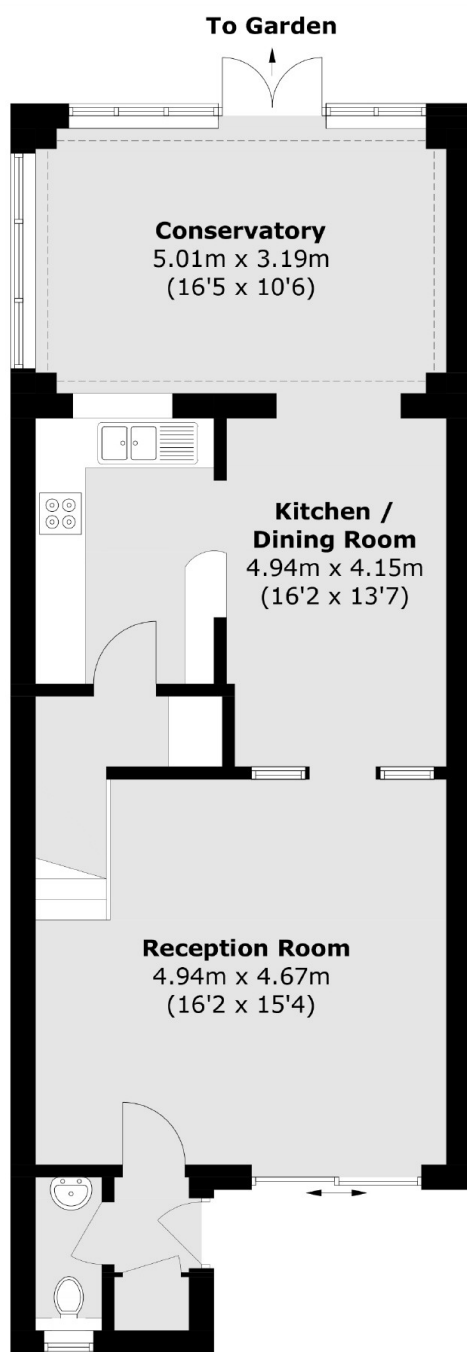
A spacious, light-filled lounge is separated from the study by custom room dividers. The kitchen, utility room, and downstairs cloakroom enhance the sense of space, while a beautiful conservatory offers stunning river views. A state-of-the-art A/C provides year-round comfort.

Upstairs, three double bedrooms include a master with meadow and river views, built-in wardrobes, and A/C. A partially boarded loft with a pull-down ladder adds extra storage.

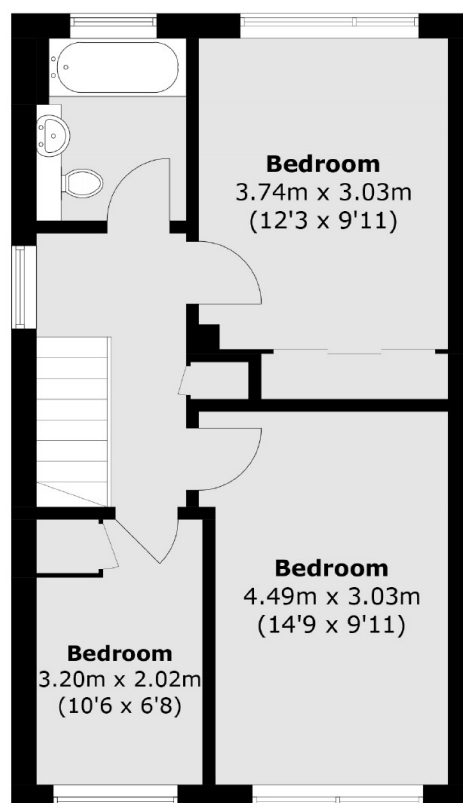
The private garden features bespoke double gates to the meadow, perfect for dog owners and water sports enthusiasts. There's potential for an extension (STPP), two garden sheds, and a side access gate.



Buckingham Gardens, West Molesey, KT8



Ground Floor



First Floor

Total area (approx.): 111.2 sq. m (1196.9 sq. ft)