



Bridge Wharf, KT16
£310,000

Waterview


A bright, spacious and well presented two bedroom apartment with the benefit of two balconies, one of which overlooks the The Thames by Chertsey Bridge.

Bridge Wharf is located overlooking the Thames by the picturesque Chertsey Bridge with a host of popular pubs, shops and restaurants nearby.





The property comprises of a large open plan kitchen/living/dining room with a high quality fitted kitchen and a rear facing balcony as well as a sizeable river facing balcony.

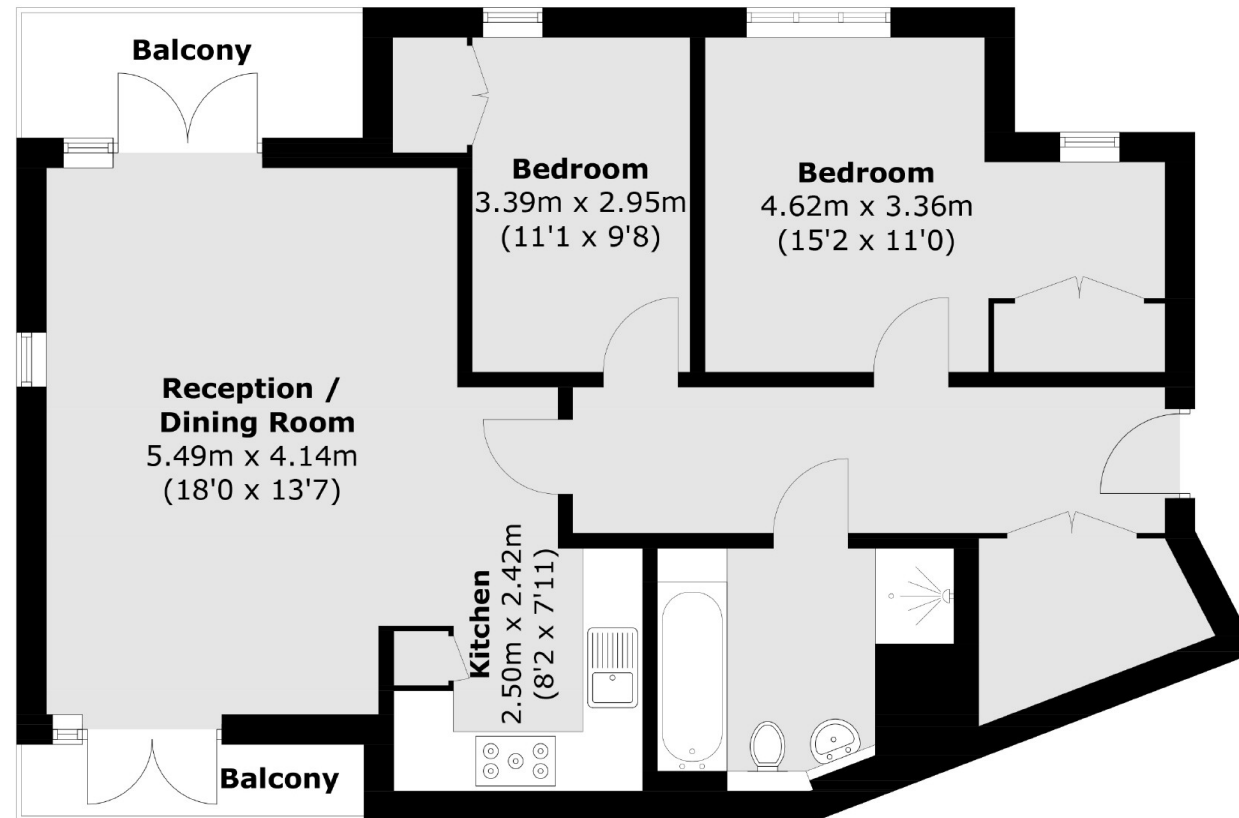
There is a large principal double bedroom with built in wardrobes and a further second bedroom and family bathroom. The apartment is located in a lift serviced block within the modern riverside development and comes with an allocated parking space.

Features

- Spacious Apartment
- Two Bedrooms
- Two Balconies
- Lift Service
- Beautifully Presented
- No Onward Chain



Bridge Wharf, Chertsey, KT16



Total area (approx.): 74.0 sq. m (796.5 sq. ft)
Balcony area (approx.): 6.8 sq. m (73.2 sq. ft)

Contact

To arrange a viewing call our office on the number below or visit our website.



Regulated
Estate Agent
and Letting Agent

Energy Rating: C. We aim to make our particulars both accurate and reliable. However they are not guaranteed; nor do they form part of an offer or contract. If you require clarification on any points then please contact us, especially if you're traveling some distance to view. Please note that appliances and heating systems have not been tested and therefore no warranties can be given as to their good working order.

