



## Townmead Road, SW6

**£496** Per week

This modern Manhattan studio flat on the first floor offers a modern fully fitted open plan kitchen living room with wood floors throughout, a modern tiled bathroom and 24 hour concierge.

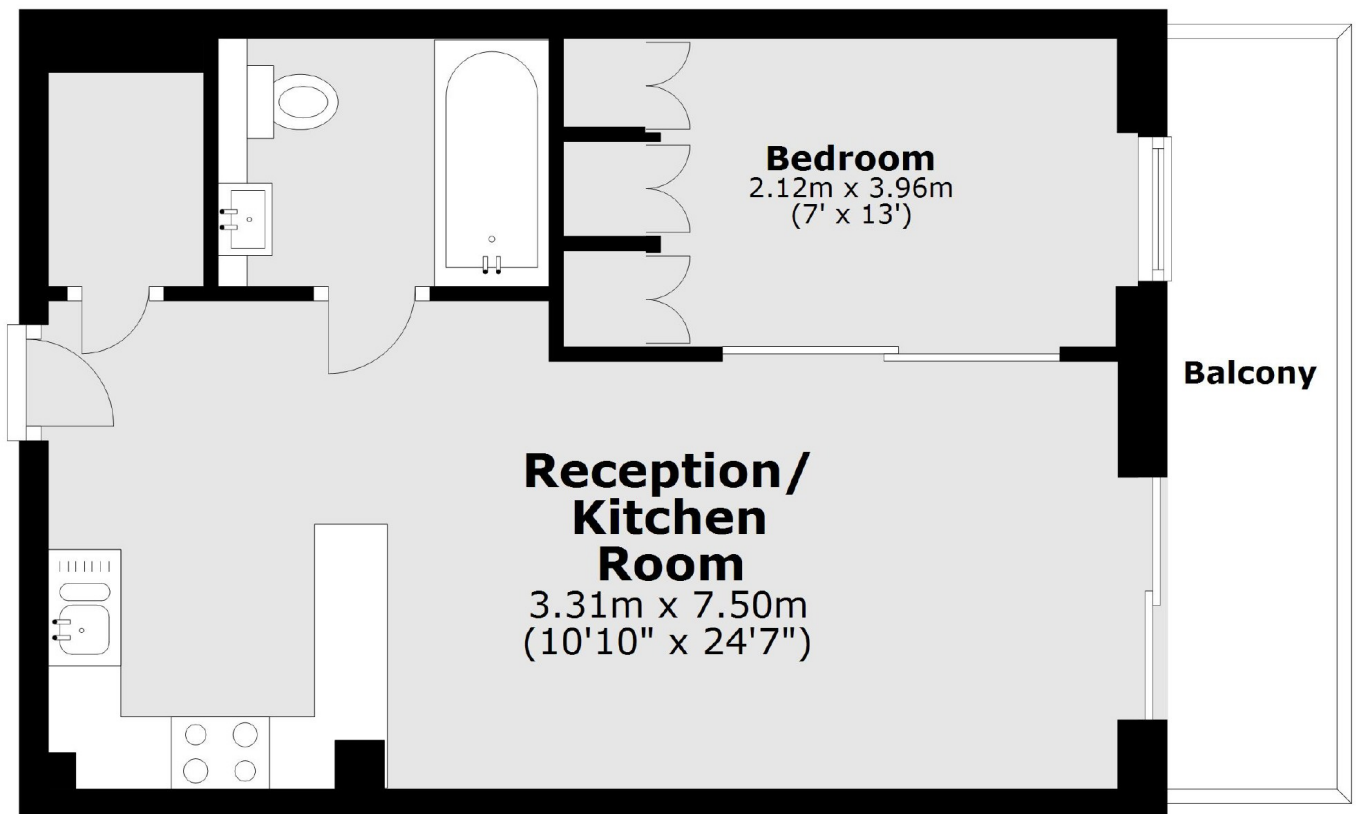
Imperial Wharf is served by its own overground station. Alternatively commuters can brave the Thames with the River Taxi at Chelsea Harbour.

### Features

- One Bedroom
- Available Now
- Balcony
- Gym Access
- Water Included
- 24hrs Concierge

**Townmead Road,  
London, SW6**

## **First Floor**



**Main area: Approx. 38.8 sq. metres (417.6 sq. feet)**  
Plus balconies, approx. 6.6 sq. metres (70.8 sq. feet)