



Thamespoint, TW11

£575,000

Waterview



A beautifully presented two bedroom ground floor apartment in this exclusive riverside development with a large 310 sq ft private terrace overlooking The Thames and access to moorings.

Thamespoint is an exclusive riverside development with a mooring option, located off Broom Road in Teddington.





Accommodation is made up of a spacious double reception room with dining, and living space with access riverside terrace. There is a stylish, modern integrated kitchen. The principal double bedroom has built-in wardrobes and access to terrace with a second bedroom and bathroom.

The development benefits from a resident's heated swimming pool with changing rooms, tennis court, well kept communal gardens, caretaker and private car port. Offered with no onward chain.

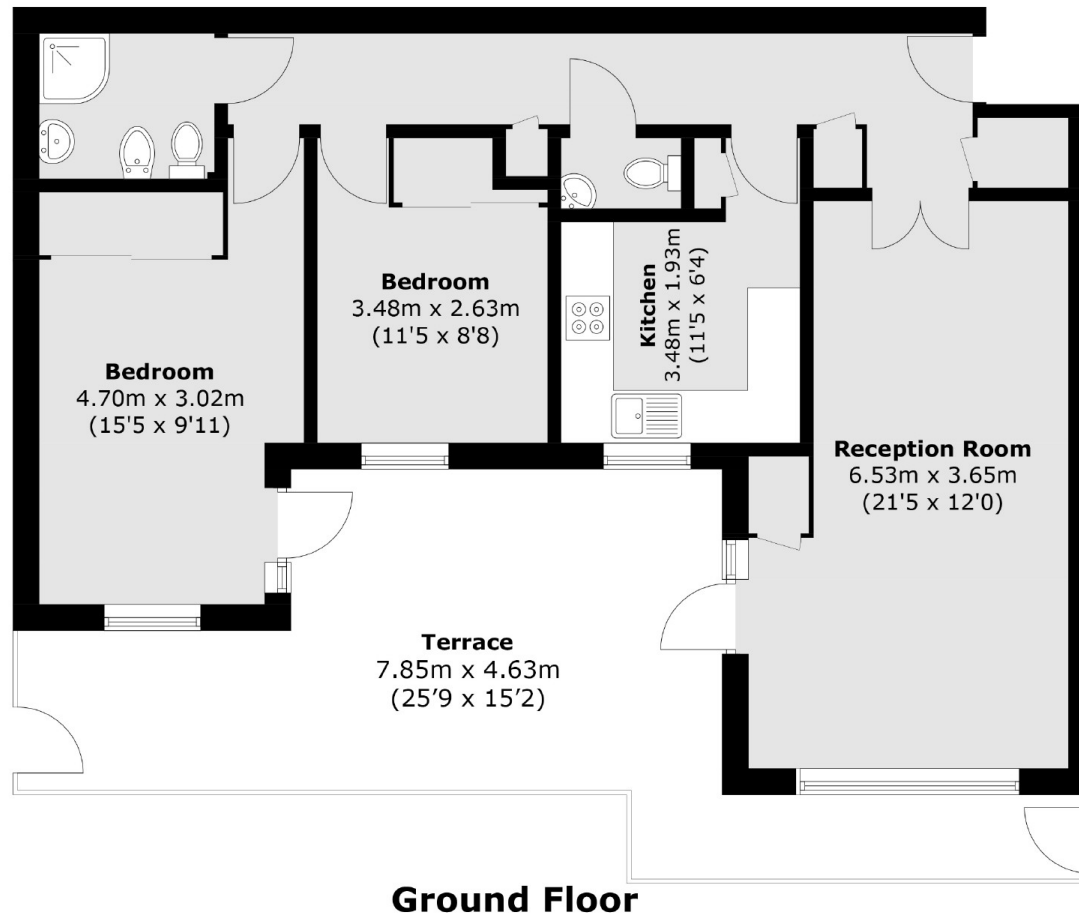
### Features

Beautiful Apartment  
Two Bedrooms  
Large Private Terrace  
Swimming Pool  
Caretaker  
Tennis Court





# Thamespoint, Teddington, TW11



Total area (approx.): 72.3 sq. m (778.2 sq. ft)  
Terrace area (approx.): 28.8 sq. m (310.0 sq. ft)

## Contact

To arrange a viewing call our office on the number below or visit our website.



Energy Rating: . We aim to make our particulars both accurate and reliable. However they are not guaranteed; nor do they form part of an offer or contract. If you require clarification on any points then please contact us, especially if you're traveling some distance to view. Please note that appliances and heating systems have not been tested and therefore no warranties can be given as to their good working order.



