



## Parkland Walk, SW6

£1,269 Per week

**SHORT LET:** A stunning two double bedroom, two bathroom flat with a private balcony located within the secure King's Road Park development.

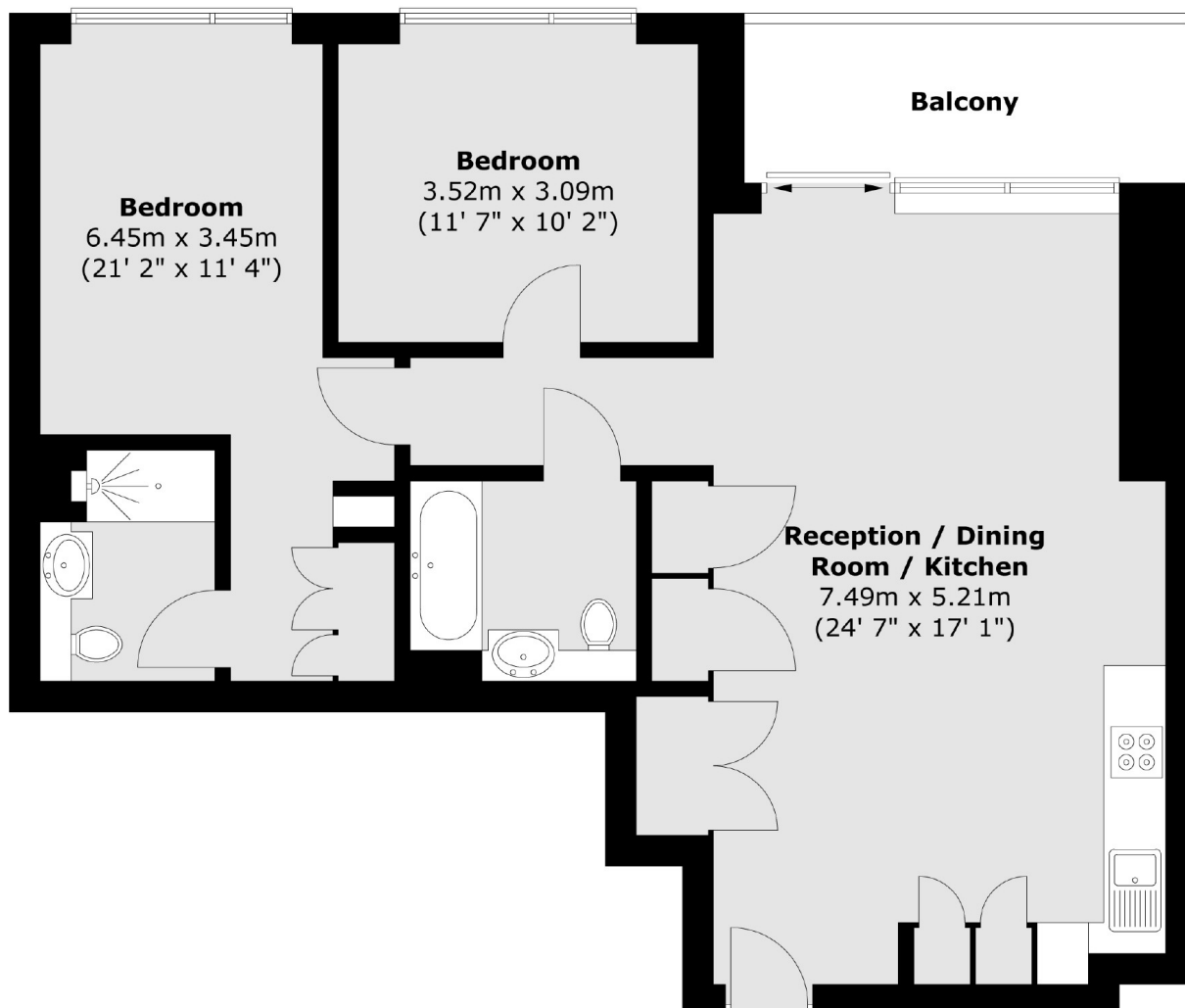
Ideally located for the local amenities of Imperial Wharf while there is a wide range of shops, bars and boutiques available on New King's Road.

### Features

- Two Double Bedroom
- Two Bathrooms
- Bills Included
- Swimming Pool
- Private Balcony
- 24hr Concierge

# Parkland Walk, London, SW6

## Second Floor



Total area (approx.) : 74.4 sq. m (801 sq. ft)  
Total balcony area (approx.) : 6.6 sq. m (71 sq. ft)