



Ditton Reach, KT7

£890,000

Waterview



A fantastic three/four bedroom family townhouse with open plan living space and river views feature "Stovex" real fireplace and beautiful wooden flooring within this riverside development overlooking The Thames at Thames Ditton. There is off street parking for upto four cars and a

Ditton Reach is located off the Portsmouth Road between Thames Ditton and Kingston with a range of shops, pubs and restaurants nearby,





Accommodation is made up of entrance hall leading to a t.v.snug room with doors to the pretty garden and door to study/bedroom four and shower room. Also on the ground floor is the utility room and W.C.

On the first floor there is an impressive open plan living space with river views, feature "Stovex" real fireplace and beautiful wooden flooring. A stylish, recently fitted kitchen leads onto a breakfast room.

On the top floor the spacious principal bedroom has fitted wardrobes and en-suite. There are two further double bedrooms and a family bathroom. To the front of the house there is a driveway with parking for up to four cars leading to a garage/workshop, and storage shed to the side of the house. To the rear a pretty, landscaped garden has a covered entertaining area with further storage shed. There is access to a large riverside garden adjacent and a public slipway. There is a transferable 20ft mooring available at a cost of £2,400 per annum. The river view shown is taken from the Ditton Reach open space gardens.

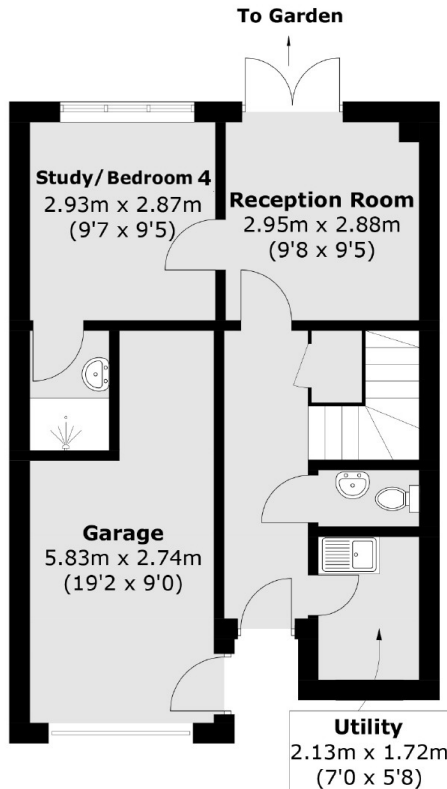
### Features

- Family Townhouse
- River Views
- New Kitchen
- Large Living Area
- Garage
- Pretty Garden

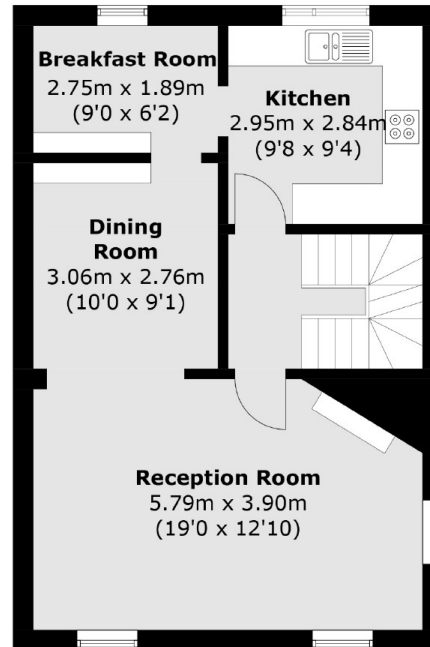




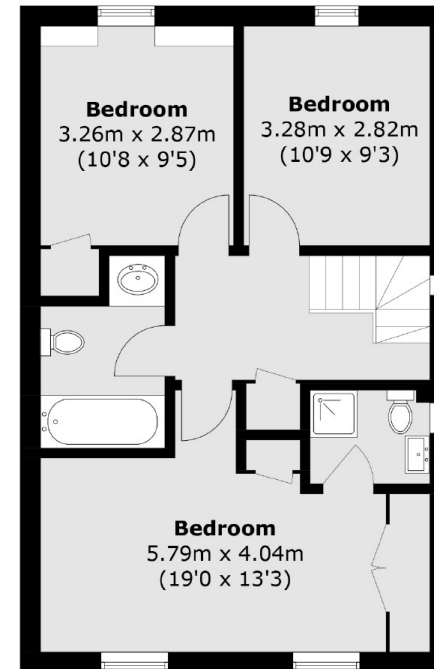
# Ditton Reach, Thames Ditton, KT7



**Ground Floor**



**First Floor**



**Second Floor**

Total area (approx.): 139.6 sq. m (1,502.4 sq. ft)  
Garage : 14.8 sq. m (159.3 sq. ft)  
Total: 154.4 sq. m (1,661.7 sq. ft)

## Contact

To arrange a viewing call our office on the number below or visit our website.



Energy Rating: D. We aim to make our particulars both accurate and reliable. However they are not guaranteed; nor do they form part of an offer or contract. If you require clarification on any points then please contact us, especially if you're traveling some distance to view. Please note that appliances and heating systems have not been tested and therefore no warranties can be given as to their good working order.



