



Lombard Road, SW11
£1,275,000

Waterview


A bright and spacious split level penthouse that is beautifully presented with balcony and further large roof terrace taking in the fantastic river views.

Lombard Road runs parallel to The Thames at Battersea within a short walk of the popular restaurants and cafes of Battersea Square.





Accommodation is made up of entrance hall leading to a large open plan living space with a stylish kitchen and central island/breakfast bar, space for dining, reception area and doors to an L shaped balcony overlooking the river.

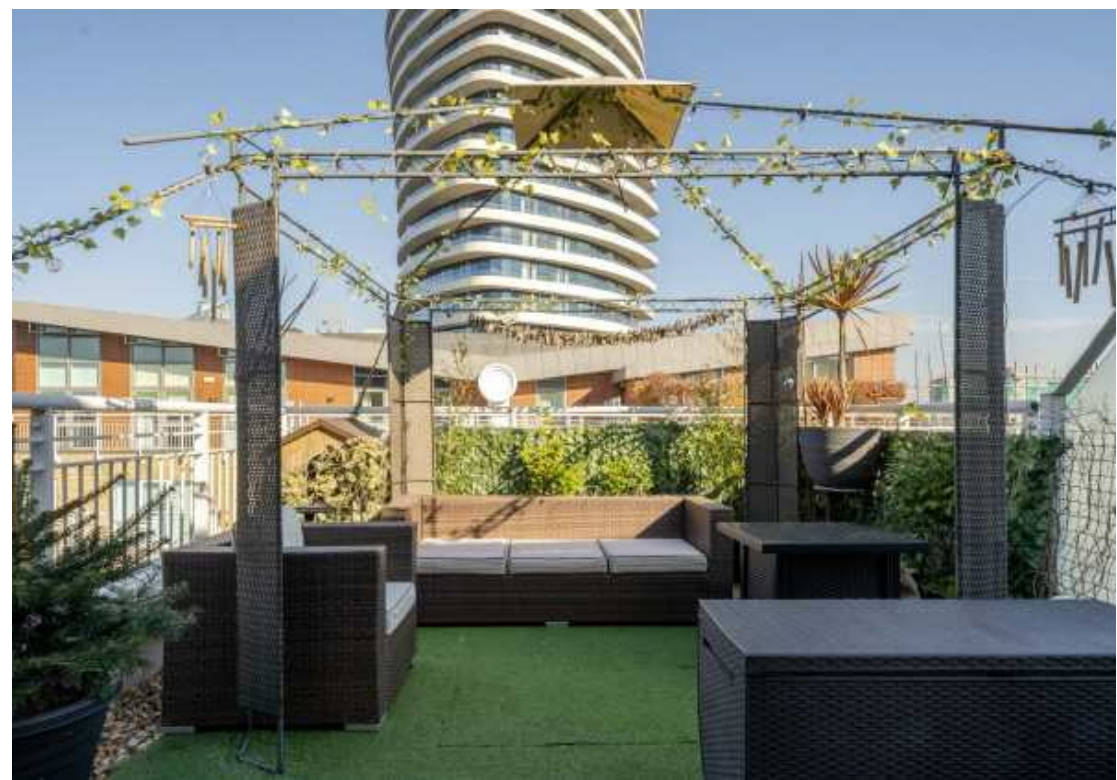
There are two double bedrooms and a further single on this level with en-suite to the principal suite and a further family bathroom.

The top floor is made up of an impressive 31' double reception room with high ceilings and doors to a large entertaining roof terrace with fantastic river views.

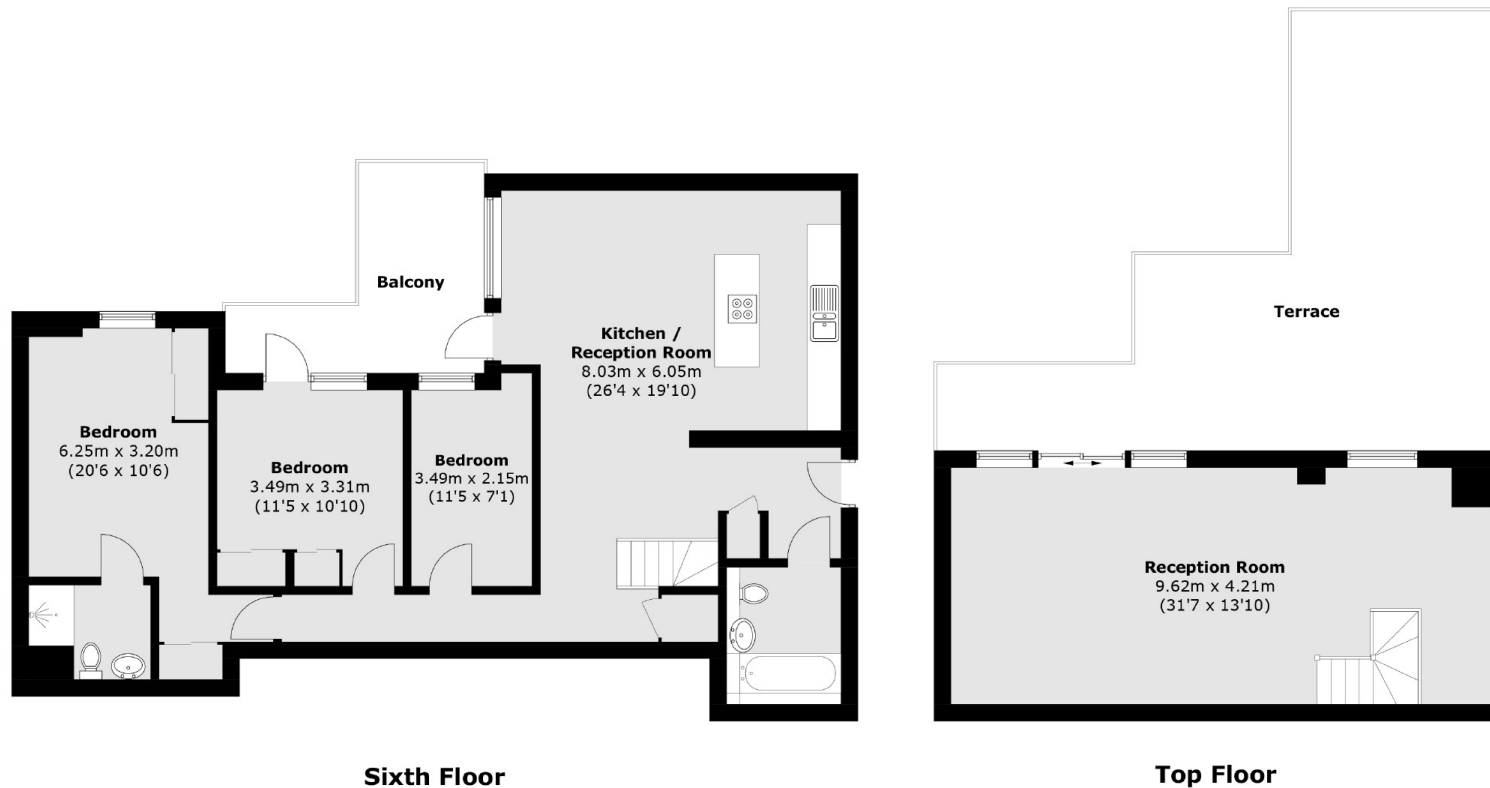
The apartment has a double sized parking space to fit two cars and there is a good concierge service.

Features

Penthouse
Beautifully Presented
Split Level
Roof Terrace
River Views
Parking



Lombard Road, Battersea, SW11



Total area (approx.): 135.1 sq. m (1,454.2 sq. ft)
Terrace / Balcony: 56.2 sq. m (604.9 sq. ft)

Contact

To arrange a viewing call our office on the number below or visit our website.



Energy Rating: C. We aim to make our particulars both accurate and reliable. However they are not guaranteed; nor do they form part of an offer or contract. If you require clarification on any points then please contact us, especially if you're traveling some distance to view. Please note that appliances and heating systems have not been tested and therefore no warranties can be given as to their good working order.

