



Swan Walk, TW17
£479,950

Waterview


A bright and beautifully presented top floor flat that has been recently refurbished throughout with fantastic views of The Thames with a private balcony.

Swan Walk is located on The Thames by Walton Bridge.





Accommodation is made up of entrance hall leading to a spacious double reception room and high vaulted ceiling with glazing and French doors to Juliette balcony and further external balcony with river views. There is a newly fitted integrated kitchen, principal double bedroom with en-suite and access to balcony with a further spacious double bedroom and family bathroom. Offered with vacant possession and no onward chain.

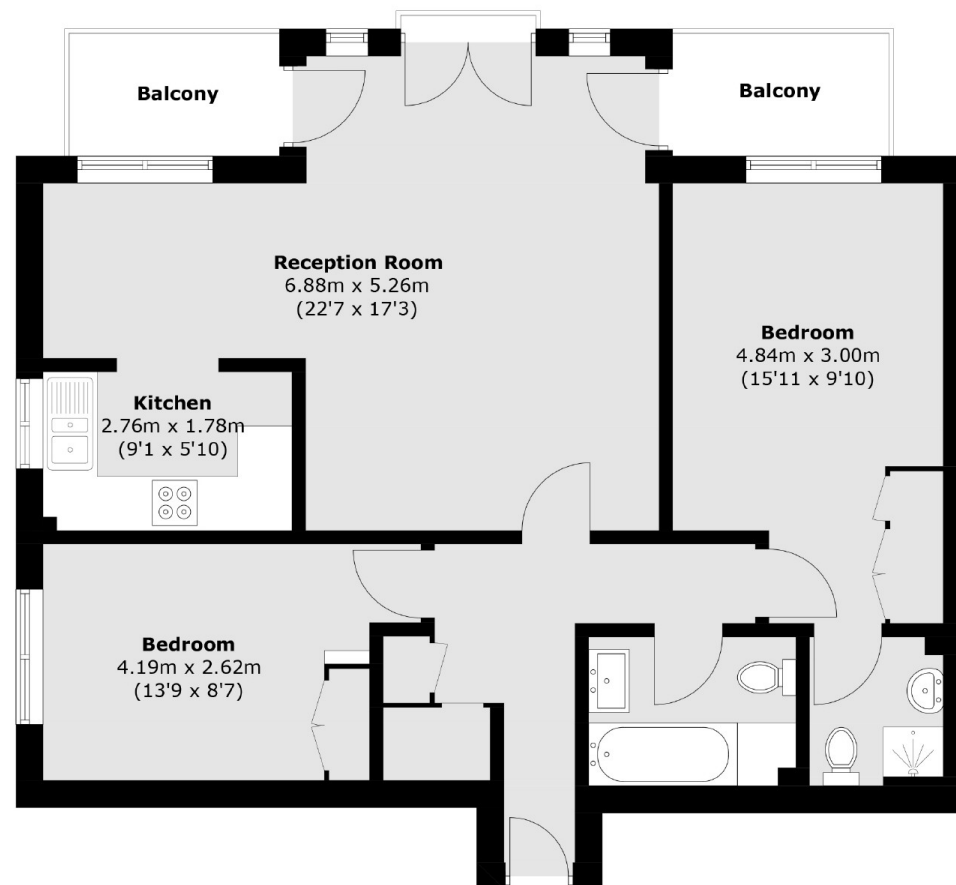
Within this private gated development there are beautifully kept communal gardens with exclusive access to the river. As well as two allocated parking spaces.

Features

Beautiful Apartment
Fully Refurbished
Two Bedrooms
Two Bathrooms
Private Balcony
River Views



Swan Walk, Shepperton, TW17



Total area (approx.): 72.9 sq. m (784.7 sq. ft)
Balcony : 6.4 sq. m (68.9 sq. ft)

Contact

To arrange a viewing call our office on the number below or visit our website.



Regulated
Estate Agent
and Letting Agent

Energy Rating: C. We aim to make our particulars both accurate and reliable. However they are not guaranteed; nor do they form part of an offer or contract. If you require clarification on any points then please contact us, especially if you're traveling some distance to view. Please note that appliances and heating systems have not been tested and therefore no warranties can be given as to their good working order.

