



Pharaohs Island, TW17
£820,000

Waterview


A charming, three bedroom riverside home that's full of character set on this boat access island on The Thames at Shepperton.

Pharaohs Island is located off The Towpath at Shepperton.





Accommodation is made up of entrance hall, a beautiful open plan living and dining space with vaulted ceiling, kitchen and bi-fold doors to riverside terrace. There is a spacious dining area with built-in pizza oven and further bi-fold doors to outside eating area with river views.

The Master bedroom has a stunning en-suite and the second double bedroom has a feature full height round window. There is a third bedroom and lovely family bathroom.

To the riverside there is a 53" private mooring from a pretty south facing garden.

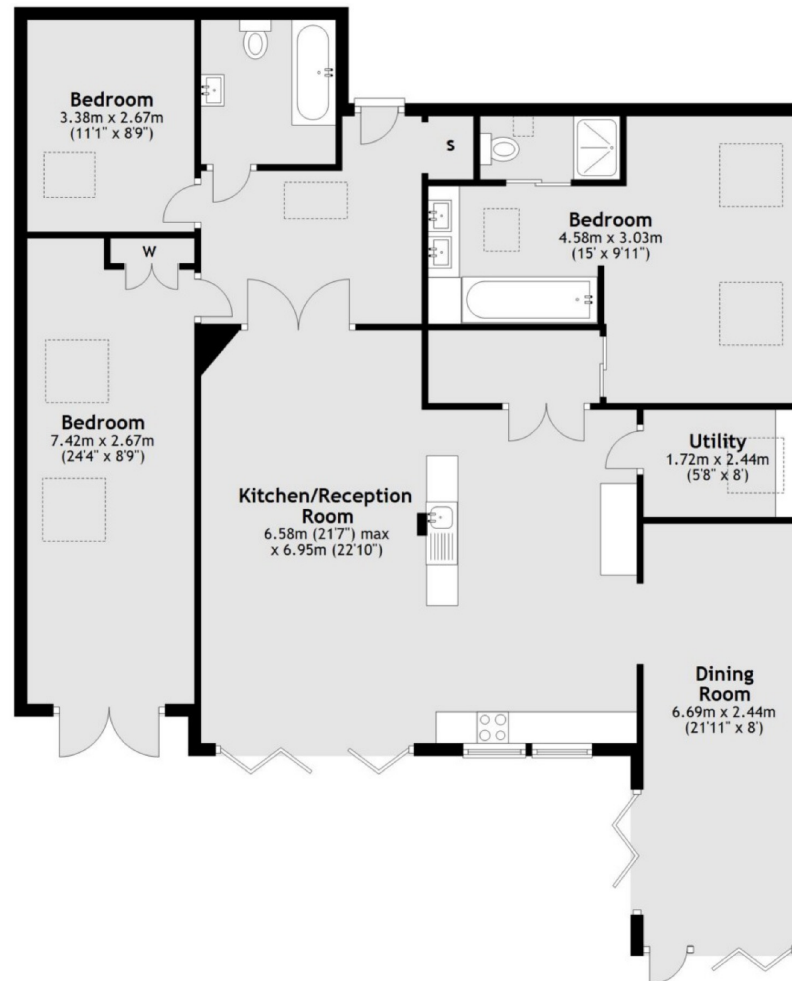
Features

Charming Family
Home
Three Bedrooms
Two Bathrooms
Stunning Living Area
53" Private Mooring
Great Entertaining
Space



Pharaohs Island, Shepperton, TW17

Ground Floor



Total area: approx. 136.1 sq. metres (1464.8 sq. feet)

Contact

To arrange a viewing call our office on the number below or visit our website.



Regulated
Estate Agent
and Letting Agent

Energy Rating: D. We aim to make our particulars both accurate and reliable. However they are not guaranteed; nor do they form part of an offer or contract. If you require clarification on any points then please contact us, especially if you're traveling some distance to view. Please note that appliances and heating systems have not been tested and therefore no warranties can be given as to their good working order.

