



Ham Island, SL4  
£595,000

Waterview  




A charming three bedroom detached home set within pretty gardens backing onto The Thames with a large double garage/workshop on this private Island.

Ham Island is an idyllic private island on the Thames at Old Windsor.





Accommodation is made up of a modern integrated kitchen with high vaulted ceiling and breakfast bar leading onto a spacious double reception room with log burner. Off the living room is a conservatory/dining room overlooking the garden. There are three double bedrooms one with en-suite, a family bathroom and study.

To the front there is off street parking for several cars, a double garage/workshop and lawned garden. To the rear there is a pretty, south west facing garden with patio area, summer house/cabin, outside office and a riverside entertaining space measuring approx 60ft with a deck overlooking the river and a winched track for launching a day boat.

### Features

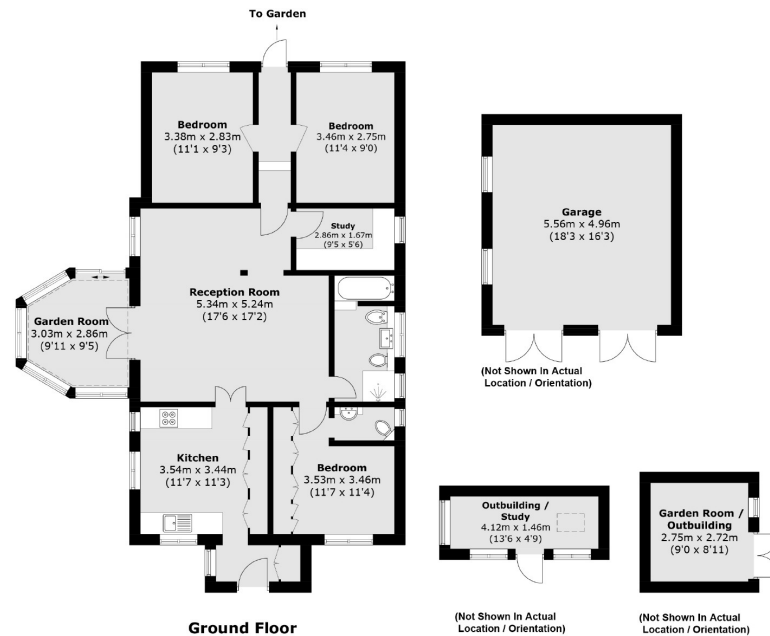
Detached House  
Three Double Bedrooms  
60ft River Frontage  
South West Facing  
Large Gardens  
Double Garage







# Ham Island, Old Windsor, SL4



Approx Internal Area: 101.6 sq. m (1,093.6 sq. ft)  
Outbuildings: 41.9 sq. m (451.0 sq. ft)  
Total: 143.5 sq. m (1,544.6 sq. ft)

## Contact

To arrange a viewing call our office on the number below or visit our website.



Energy Rating: D. We aim to make our particulars both accurate and reliable. However they are not guaranteed; nor do they form part of an offer or contract. If you require clarification on any points then please contact us, especially if you're traveling some distance to view. Please note that appliances and heating systems have not been tested and therefore no warranties can be given as to their good working order.



