



Bridges Court Road, SW11
£475,000

Waterview


A stunning, one double bedroom apartment in this modern built riverside development with private balcony and river views.

Bridges Court Road runs parallel to The Thames in Battersea with Wandsworth Town a short distance away.





Accommodation is made up of a bright and spacious open plan living room with space for dining, integrated kitchen and double aspect from floor to ceiling windows with doors to private balcony.

The large double bedroom has built-in wardrobes and access to the balcony and there is a luxury bathroom.

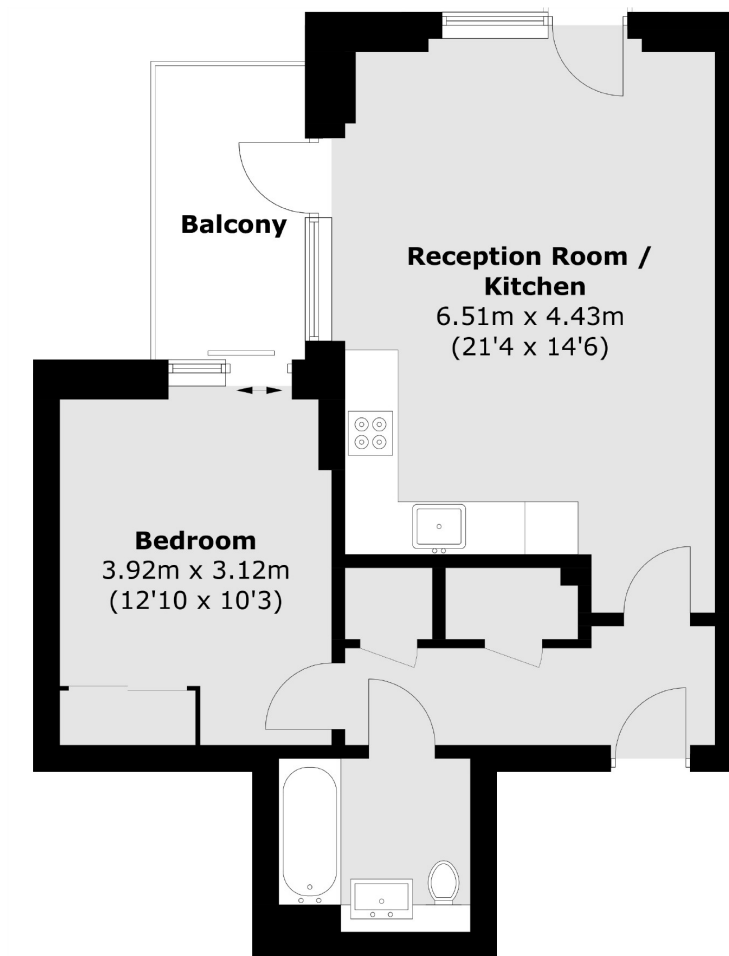
The building is lift serviced with an excellent concierge, beautiful communal roof gardens and secure parking available but not included.

Features

Stunning Apartment
Modern Development
Private Balcony
Concierge
River Views
No Chain



Bridges Court Road, Battersea, SW11



Total area (approx.): 51.6 sq. m (555.4 sq. ft)
Balcony area: 5.7 sq. m (61.3 sq. ft)

Contact

To arrange a viewing call our office on the number below or visit our website.



Energy Rating: B. We aim to make our particulars both accurate and reliable. However they are not guaranteed; nor do they form part of an offer or contract. If you require clarification on any points then please contact us, especially if you're traveling some distance to view. Please note that appliances and heating systems have not been tested and therefore no warranties can be given as to their good working order.

