



River Bank, KT7

£2,000,000

Waterview


A beautiful family home on this stunning stretch of the river at Thames Ditton.

Riverbank is located on the river in Thames Ditton close to Thames Ditton Village and Station.





Accommodation is made up of a bright open plan family living area which offers amazing full width river views and incorporates a dining area, reception area and breakfast bar onto a stylish kitchen. Also on this level is a large study, double bedroom with integrated pull down bed and French doors to deck and rear garden, as well as a utility room and shower room.

There are stairs to a basement with a cinema room/games room, W.C, and large workshop.

The main feature on the first floor is an impressive river facing master suite with far reaching river views and Hampton Court Park beyond with dressing area and en suite. There is a further double bedroom, single bedroom and bathroom on this level.

The garden has been beautifully landscaped and has a lawn and patio area with steps to 80ft river frontage and mooring with unrivalled views.

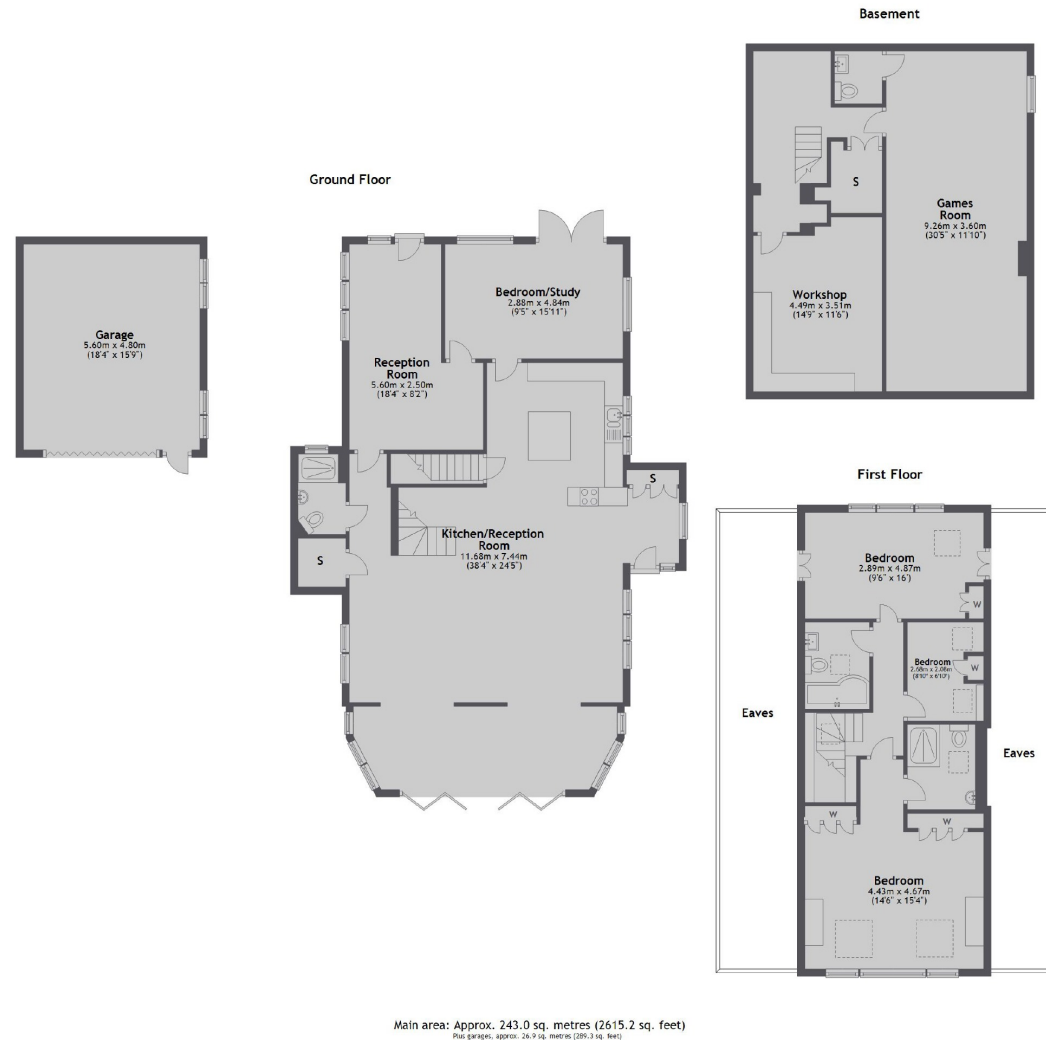
To the rear there are further pretty gardens and gate to off street parking for several cars, garage and electrical charging point. The

Features

- Large Family Home
- Impressive Master Suite
- Unrivalled River Views
- 80ft River Frontage
- Off Street Parking
- Open Plan Living



River Bank, Thames Ditton, KT7



Contact

To arrange a viewing call our office on the number below or visit our website.



Energy Rating: C. We aim to make our particulars both accurate and reliable. However they are not guaranteed; nor do they form part of an offer or contract. If you require clarification on any points then please contact us, especially if you're traveling some distance to view. Please note that appliances and heating systems have not been tested and therefore no warranties can be given as to their good working order.

