



Thames Meadow, TW17
£975,000

Waterview


A fantastic riverside home with elevated views of The Thames set over three levels and incorporating four bedrooms, three bathrooms and a 36ft mooring.

Thames Meadow is a private road running parallel to The Thames with easy access to Walton Town centre and Shepperton Village.





Accommodation is made up of entrance hall leading to an impressive 27ft open plan living space with kitchen, dining area and reception room all overlooking the garden and river from sliding glass doors. There are three bedrooms on the ground floor, one with en-suite and a further shower room. On the top floor is the main bedroom with en-suite and river views.

The basement incorporates a garage/utility workshop with front and garden access with flood prevention measures including sump pump and removable barriers.

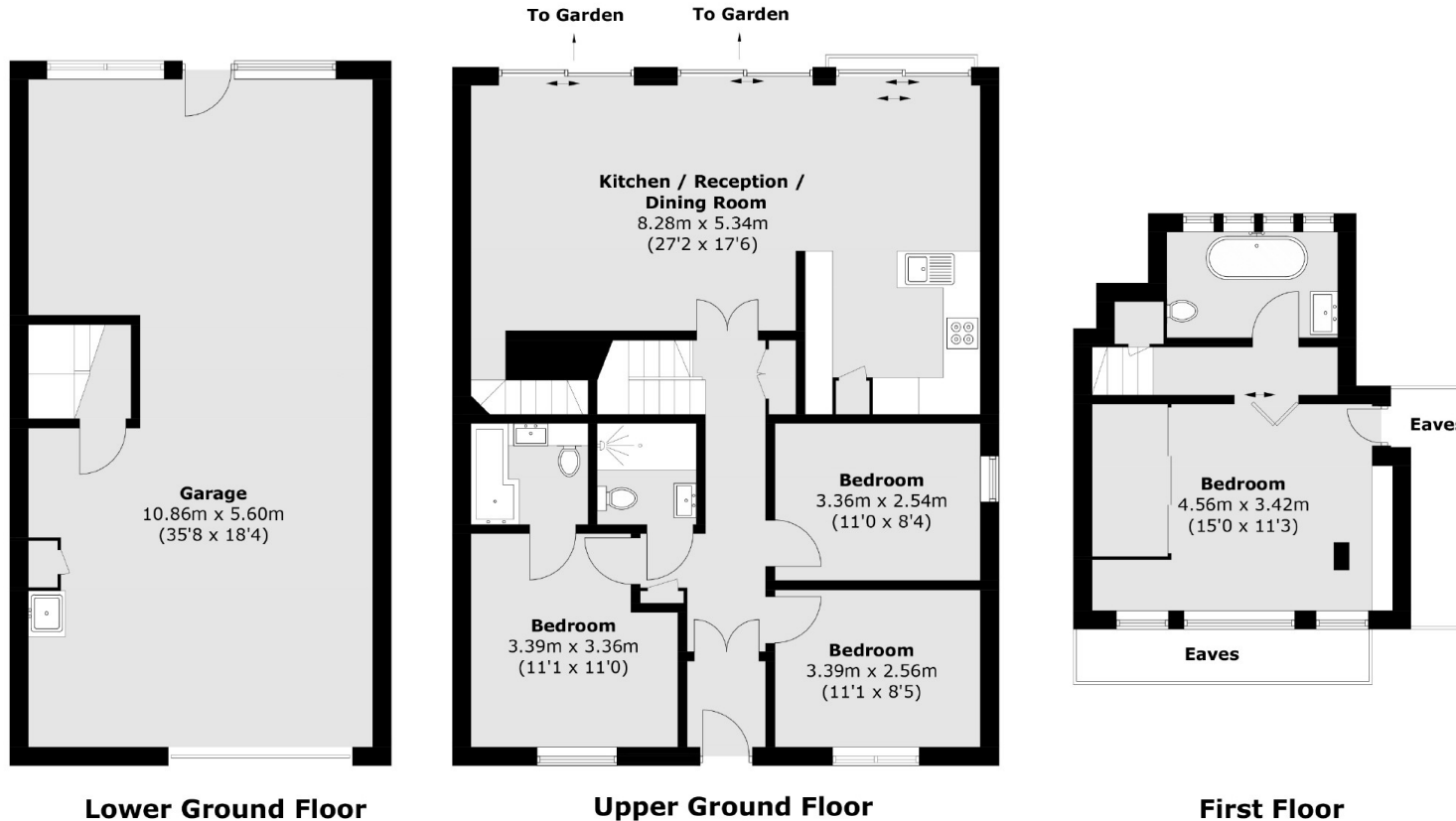
The pretty south west facing garden has decked eating area and tiered lawns leading to a 36ft private mooring and pontoon.

Features

Riverside Home
Elevated Views
Four Bedrooms
Three bathrooms
36ft Mooring
South West facing



Thames Meadow, Shepperton, TW17



Total area (approx.): 176.9 sq. m (1,904.1 sq. ft)
(Including Garage / Excluding Eaves)

Contact

To arrange a viewing call our office on the number below or visit our website.



Energy Rating: C. We aim to make our particulars both accurate and reliable. However they are not guaranteed; nor do they form part of an offer or contract. If you require clarification on any points then please contact us, especially if you're traveling some distance to view. Please note that appliances and heating systems have not been tested and therefore no warranties can be given as to their good working order.

