



Lensbury Avenue, SW6

£1,500 Per week

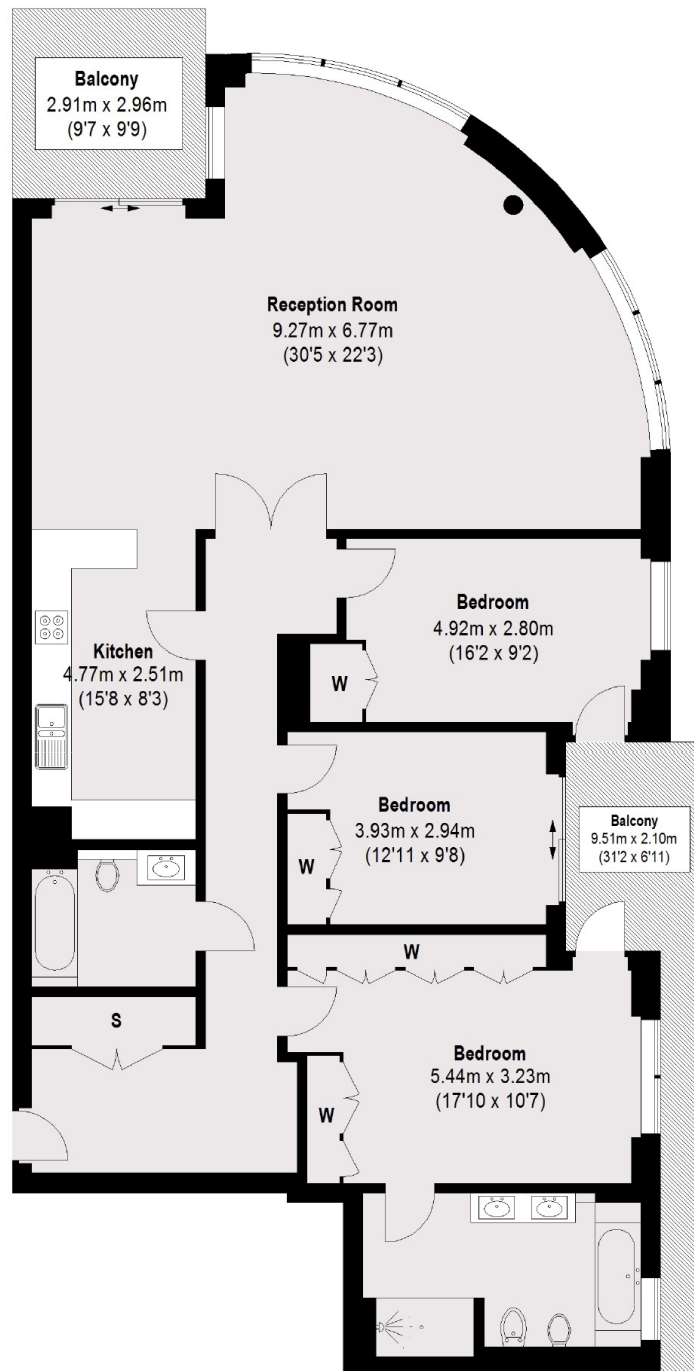
A stunning three bedroom apartment with floor to ceiling windows in a popular riverside development. This apartment has superb living space with fully integrated kitchen and generous lounge with sliding doors leading out onto the terrace. There is one underground parking space and 24 hour porterage.

Imperial Wharf offers a number of excellent restaurants and bars and the river bus service provides direct access to Blackfriars and Putney Piers.

Features

- Three Double Bedrooms
- Two Bathrooms
- Furnished
- Porterage & Security Riverside
- River Views
- Underground Parking Space

Lensbury Avenue, London, SW6



Total area (approx.): 151.29 sq. m (1628 sq. ft)
Balcony: 19.5 sq. m (210 sq. ft)

Dexters

Chelsea Harbour
5 Design Centre East
London
SW10 OXF

020 7590 9515

Energy Rating: C. We aim to make our particulars both accurate and reliable. However they are not guaranteed; nor do they form part of an offer or contract. If you require clarification on any points then please contact us, especially if you're traveling some distance to view. Please note that appliances and heating systems have not been tested and therefore no warranties can be given as to their good working order.

 **RICS** | Regulated
Estate Agent
and Letting Agent

[dexters.co.uk](https://www.dexters.co.uk)