



Laleham Reach, KT16

£725,000

Waterview

A beautiful three/four bedroom riverside home with open plan living space and bi-fold doors onto a large riverside terrace and garden with fantastic river views and 45ft private mooring.

Laleham Reach runs parallel to The Thames between Chertsey and Staines.





Accommodation is made up of a bright and spacious 24ft open plan reception room with vaulted ceiling and bi-fold doors onto the terrace. From the reception room there is access to the dining room with triple aspect and access to the terrace.

The kitchen is also open plan onto the living area. There are three double bedrooms, one with en-suite and a further large dressing room/bedroom four with a family bathroom and laundry room.

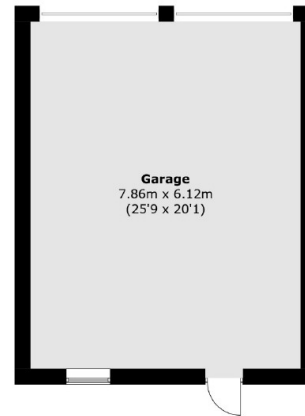
To the front of the house there is a large double garage, and to the rear, from the large terrace is a 40ft lawned garden with a 45ft private mooring.

Features

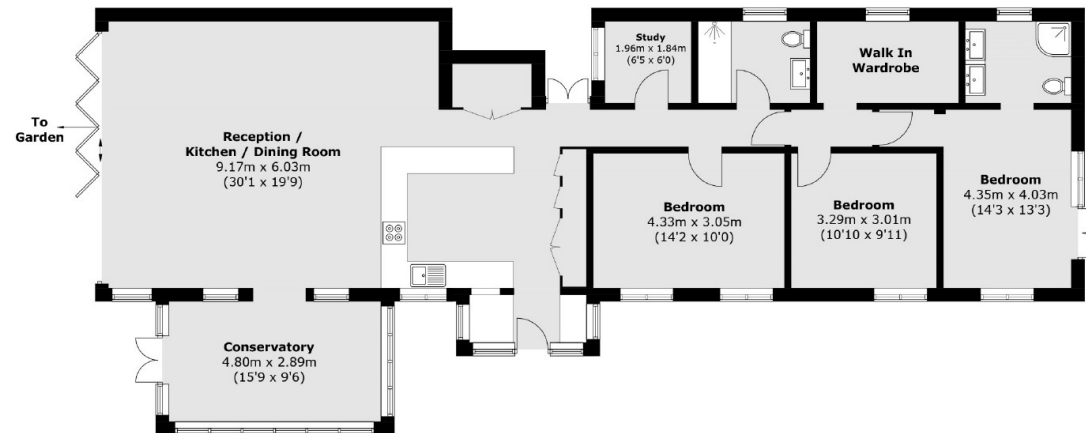
Riverside Home
Three/Four Bedrooms
No Chain
45ft Mooring
Double Garage
Open Plan Living



Laleham Reach, Chertsey, KT16



(Not Shown In Actual Location / Orientation)



Total area (approx.): 145.5 sq. m (1,566.1 sq. ft)
Garage: 48.3 sq. m (519.9 sq. ft)

Contact

To arrange a viewing call our office on the number below or visit our website.



Energy Rating: F. We aim to make our particulars both accurate and reliable. However they are not guaranteed; nor do they form part of an offer or contract. If you require clarification on any points then please contact us, especially if you're traveling some distance to view. Please note that appliances and heating systems have not been tested and therefore no warranties can be given as to their good working order.

