



Shepperton Marina, TW17
£525,000

Waterview


A beautiful 39 metre Belgian Barge that has been lovingly converted for live aboard and long range cruising. Moored in this quiet, picturesque corner of Shepperton Marina on The Thames.

Penny Lane is located off Walton Bridge Road with easy access into Walton.





The boat is accessed via the wheelhouse with steps to a bright, open plan kitchen/breakfast room with central island, integrated kitchen, granite worktops and open views from the large windows.

There is a large reception room with wooden flooring and a log burner. There are two double bedrooms, which interconnect, with a family bathroom and study. The impressive principal suite has an en-suite and range of built-in wardrobes with access to bow storage. To the rear there is a further large double bedroom with en-suite. The utility room has access to two large water storage tanks. The boat is powered by a Mercedes 10 cylinder engine with bow thrusters. On the top deck there is a jacuzzi hot tub and a crane that is capable of lifting a small car onto the deck.

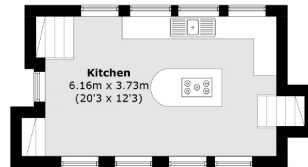
There is parking for two cars in a gated, key code entry car park adjacent to the mooring with modern floating pontoons leading to the boat

Features

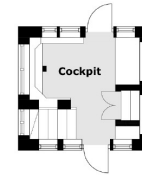
Beautiful Barge
Live Aboard
Modern Interiors
Picturesque Setting
Parking



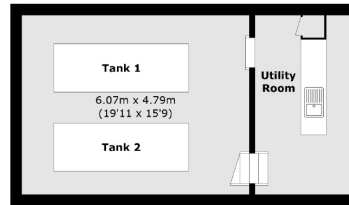
Shepperton Marina, Shepperton, TW17



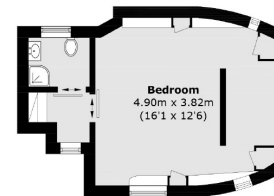
Upper Deck



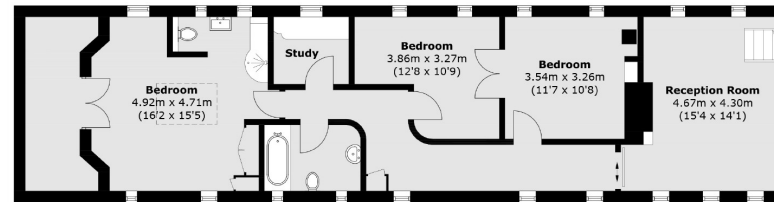
Cockpit



Lower Deck



Lower Deck



Lower Deck

Total area (approx.): 193.4 sq. m (2,081.8 sq. ft)

Contact

To arrange a viewing call our office on the number below or visit our website.



Energy Rating: . We aim to make our particulars both accurate and reliable. However they are not guaranteed; nor do they form part of an offer or contract. If you require clarification on any points then please contact us, especially if you're traveling some distance to view. Please note that appliances and heating systems have not been tested and therefore no warranties can be given as to their good working order.

