



Thames Side, SL4  
£2,400,000

Waterview  


A stunning, modern built townhouse set overlooking this picturesque part of The Thames in Windsor with high specification infrastructure and beautifully designed interiors.

Thames Side is located in the centre of Windsor overlooking the famous Eton Bridge with it's selection of excellent restaurants, shops and mainline station.





Accommodation is made up of a secure gated riverside entrance to an impressive 29' open plan kitchen/ dining space incorporating "Gaggenau" appliances, central stone topped island and views of the river. There is a large reception hall with access to private rear drive and garden, as well as a utility room and guest W.C. On the first floor the generous reception room has French doors to a covered river facing balcony. There are two double bedrooms, a beautiful family bathroom and Juliette balcony on this level.

On the top floor is the principal suite with a range of built-in wardrobes, luxury en-suite and river views. There is a further generous double bedroom, also with en-suite. To the rear of the house is an enclosed South facing garden with off street parking for one car.

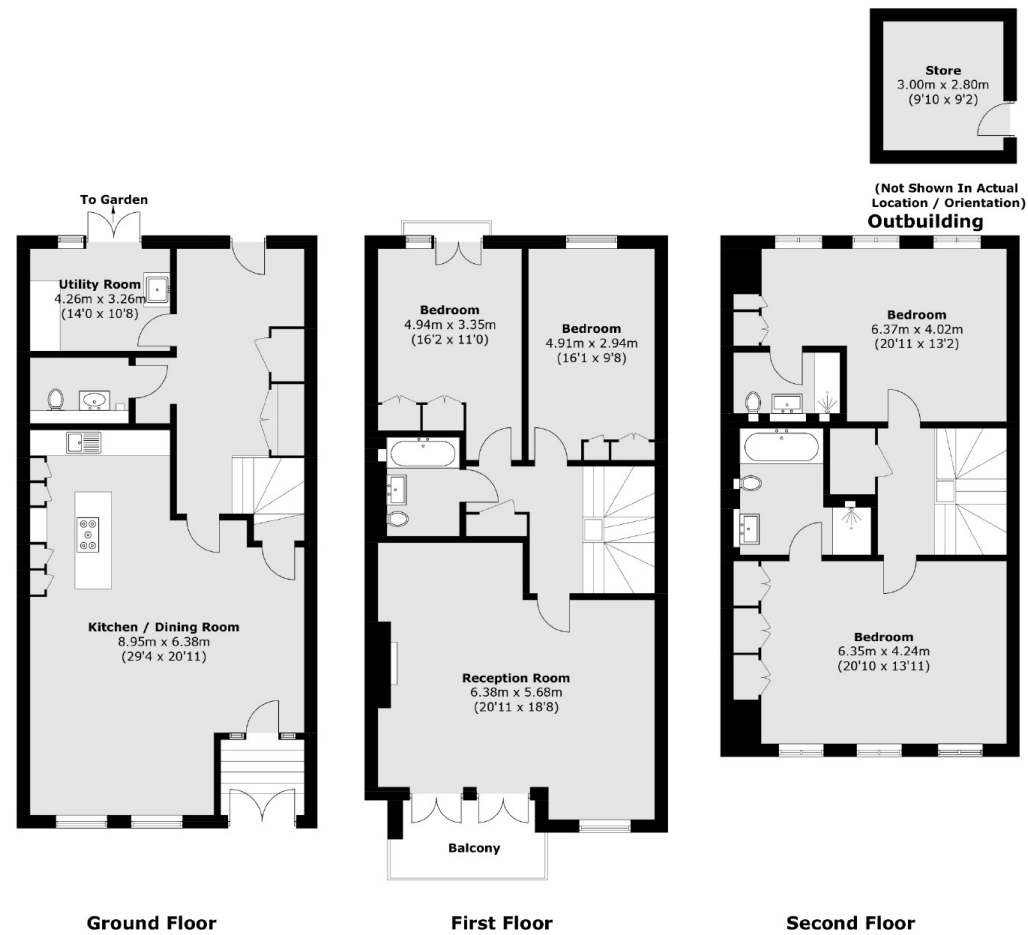
There is street side access to secure underground parking via a lift with two spaces and a large private store room and secure communal bike store.

### Features

- Stunning Townhouse
- Riverside
- Private Balcony
- Secure Parking
- Central Location
- Four Double Bedrooms



# Thames Side, Windsor, SL4



Total area (approx.): 236.3 sq. m (2,543.5 sq. ft)  
Outbuilding : 8.5 sq. m (91.5 sq. ft)  
Balcony area : 6.1 sq. m (65.6 sq. ft)

## Contact

To arrange a viewing call our office on the number below or visit our website.



Energy Rating: B. We aim to make our particulars both accurate and reliable. However they are not guaranteed; nor do they form part of an offer or contract. If you require clarification on any points then please contact us, especially if you're traveling some distance to view. Please note that appliances and heating systems have not been tested and therefore no warranties can be given as to their good working order.

