



## Admiral Square, SW10

£1,384 Per week

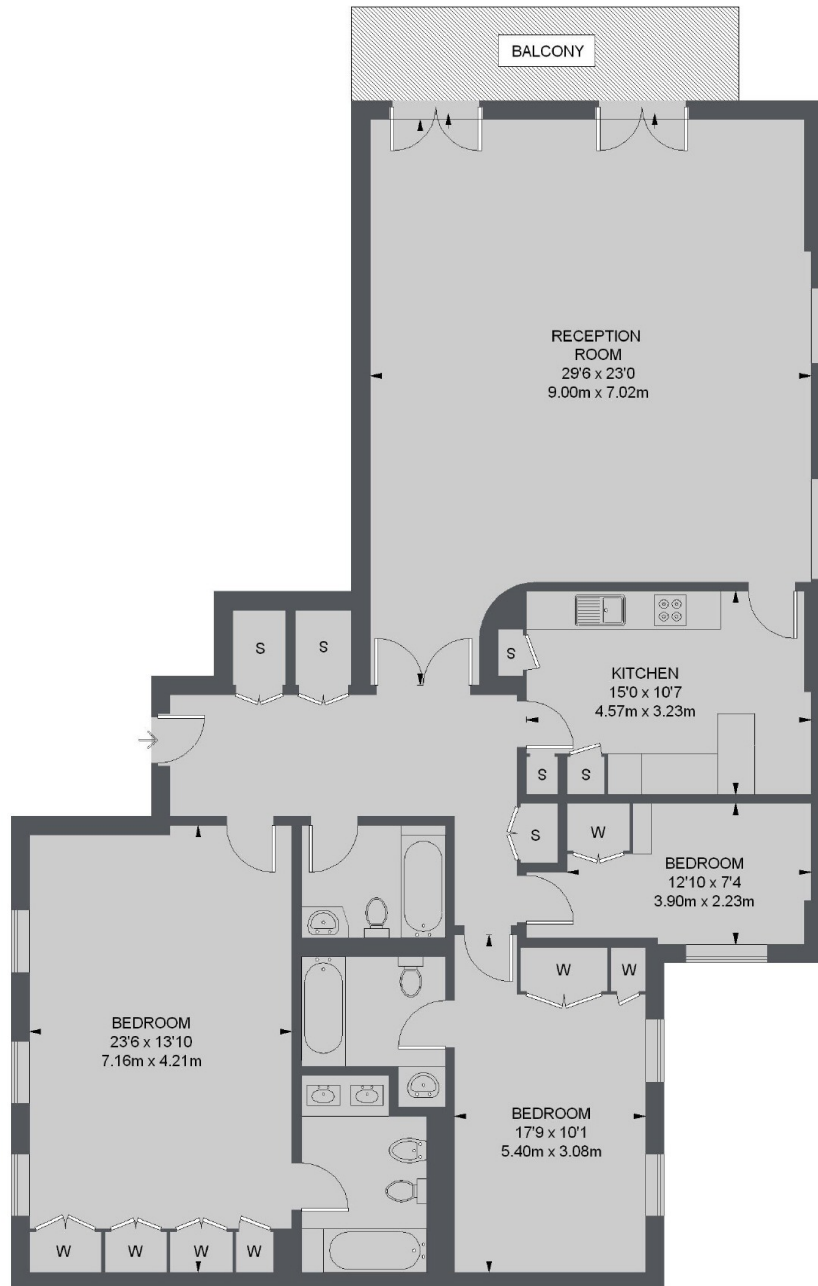
A superb lateral three bedroom, three bathroom property with great living space, a private balcony and unrestricted river views in this exclusive Riverside Development.

Close to Imperial Wharf perfect for commuters travelling into central London. Also close to the Thames water taxis for a more relaxed journey into work.

### Features

- Three Bedrooms
- Three Bathrooms
- River Views
- Private Balcony
- Concierge
- Off Street Parking

# Admiral Square, London, SW10



TOTAL APPROX. FLOOR AREA 1779 SQ. FT. (165.25 SQ. M.)

**Dexters**

Chelsea Harbour  
5 Design Centre East  
London  
SW10 OXF

020 7590 9515

Energy Rating: C. We aim to make our particulars both accurate and reliable. However they are not guaranteed; nor do they form part of an offer or contract. If you require clarification on any points then please contact us, especially if you're traveling some distance to view. Please note that appliances and heating systems have not been tested and therefore no warranties can be given as to their good working order.

 **RICS** | Regulated  
Estate Agent  
and Letting Agent

[dexters.co.uk](http://dexters.co.uk)