



Laleham Reach, KT16  
£1,080,000

Waterview  




A lovely four bedroom detached riverside home with two reception rooms, double garage, large driveway, beautiful gardens, direct river access and a private mooring located on Laleham Reach in Chertsey.

Laleham Reach is a riverside road in Chertsey which runs parallel to the village of Laleham and Staines-upon-Thames.







As you enter the property you have a large open space, great for entertaining, with a great size downstairs bedroom/office, open plan kitchen/dining room, a large reception room with doors to the riverside garden and the conservatory. On this floor there is also a large storage cupboard and W.C.

On the first floor there are two double bedrooms, a family bathroom, additional shower room and a large principal bedroom with en-suite and balcony overlooking the river.

To the riverside there is a beautifully landscaped garden leading to direct access to the River Thames with a private mooring.

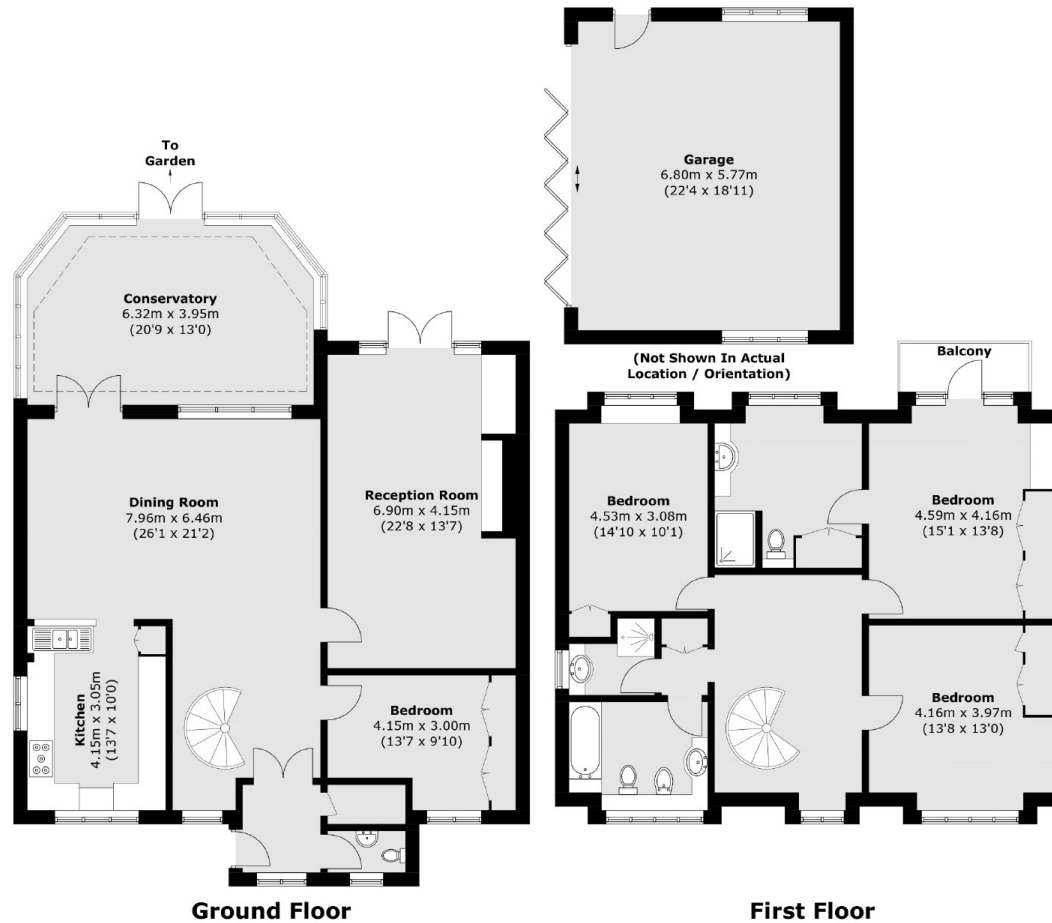
As you approach the property there are electric gates, driveway with parking for multiple cars and a double garage with large storage above.

### Features

Detached Home  
Double Garage  
Private Mooring  
River Views  
Scope To Modernise  
Riverside



# Laleham Reach, Chertsey, KT16



Total area (approx.): 222.3 sq. m (2,392.8 sq. ft)

Garage area (approx.): 40.2 sq. m (432.7 sq. ft)

Balcony area (approx.): 3.0 sq. m (32.3 sq. ft)

## Contact

To arrange a viewing call our office on the number below or visit our website.



Energy Rating: E. We aim to make our particulars both accurate and reliable. However they are not guaranteed; nor do they form part of an offer or contract. If you require clarification on any points then please contact us, especially if you're traveling some distance to view. Please note that appliances and heating systems have not been tested and therefore no warranties can be given as to their good working order.



