



Bourneside Road, KT15

£360,000

Waterview



A beautifully presented, first floor flat set in this converted riverside mill with fantastic river views over the river and lake from a large private balcony. Set within a gated development with resident's gym and swimming pool.

Coxes Lock is located off Bournside Road in Addlestone.





Accommodation is made up of an impressive open plan living area with stylish integrated kitchen and breakfast bar, reception space with french doors to balcony and dining area.

There is a spacious master bedroom with wood flooring and a walk-in wardrobe, with further double bedroom and lovely bathroom.

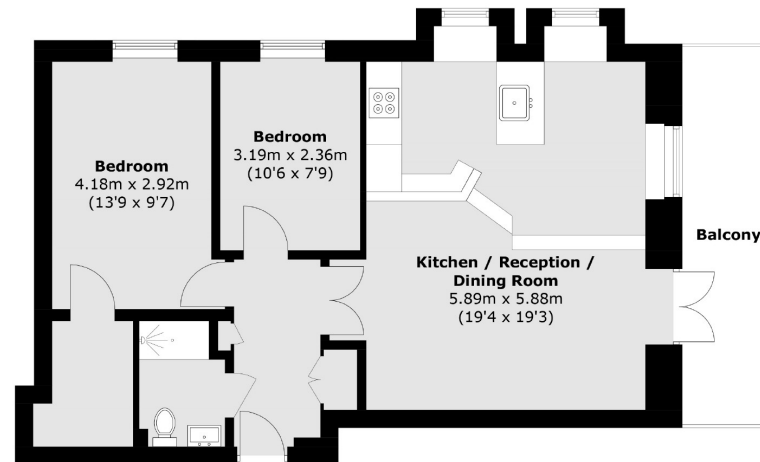
The building has lift access, resident's parking, a gym, private swimming pool and barbeque area.

Features

- Converted Mill
- Beautiful Flat
- Private balcony
- River/Lake Views
- Gated Development
- Swimming Pool
- Parking



Bourneside Road, Bourneside Road, KT15



Total area (approx.): 65.0 sq. m (699.6 sq. ft)
Balcony area (approx.): 10.1 sq. m (108.7 sq. ft)

Contact

To arrange a viewing call our office on the number below or visit our website.



Energy Rating: D. We aim to make our particulars both accurate and reliable. However they are not guaranteed; nor do they form part of an offer or contract. If you require clarification on any points then please contact us, especially if you're traveling some distance to view. Please note that appliances and heating systems have not been tested and therefore no warranties can be given as to their good working order.

