



## York Place, SW11

£750 Per week

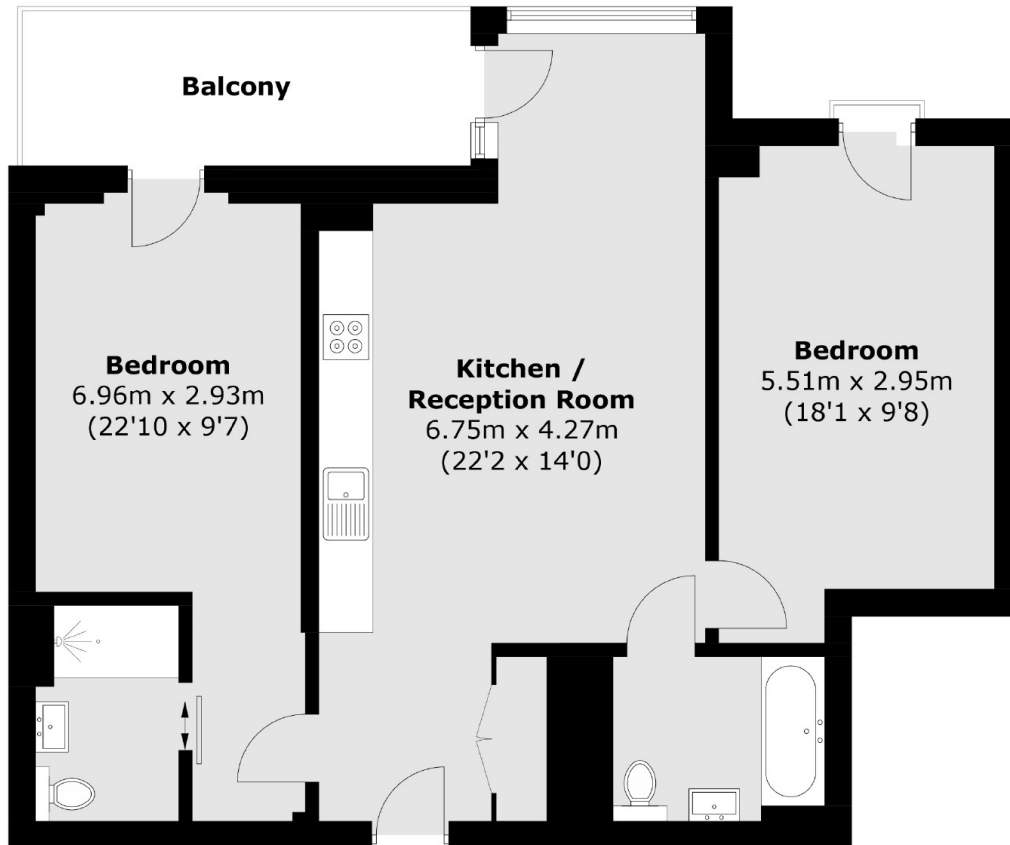
A stunning two bedroom apartment in a brand new development in Battersea (Coda Residences). This 2nd floor, garden facing apartment offers over 750 sq ft of accommodation comprising a large open plan reception/dining room, a state of the arts kitchen with excellent storage units, integrated Siemens appliances and Corian worktops, large private balcony.

Coda Residences is located in the heart of Battersea with remarkable transport links such as the Uber Boat by Thames Clippers and Clapham Junction with access to Gatwick Airport.

### Features

Two Bedrooms  
Two Bathrooms  
24hr Concierge  
Private Balcony  
Gym  
Furnished

# York Place, London, SW11



## Second Floor

Total area (approx.): 74.9 sq. m (805.1 sq. ft)  
Balcony: 8.5 sq. m (91.4 sq. ft)