



Hamhaugh Island, TW17  
£699,950

Waterview  




A charming, two double bedroom timber built riverside home set in this picturesque setting on a private island with a 33ft mooring.

Hamhaugh Island is a beautiful private island, accessed on foot by crossing the lock at Shepperton.







Accommodation is made up of a large open plan living space with vaulted ceiling, space for dining and double doors to the river facing terrace. There is a modern kitchen with central island and steps to an upper mezzanine. The spacious main bedroom has a feature fireplace and solid wood flooring. There is a second double bedroom with a range of built in wardrobes and a family bathroom. To the front a pretty garden leads to the house and front deck. Within the garden there is a one bedroom annexe with shower room and two storage sheds. To the rear a large decked terrace overlooks the south facing garden with a riverside Kontiki hut overlooking the river and 33' mooring. There are three owned parking spaces located next to The Thames Court pub.

### Features

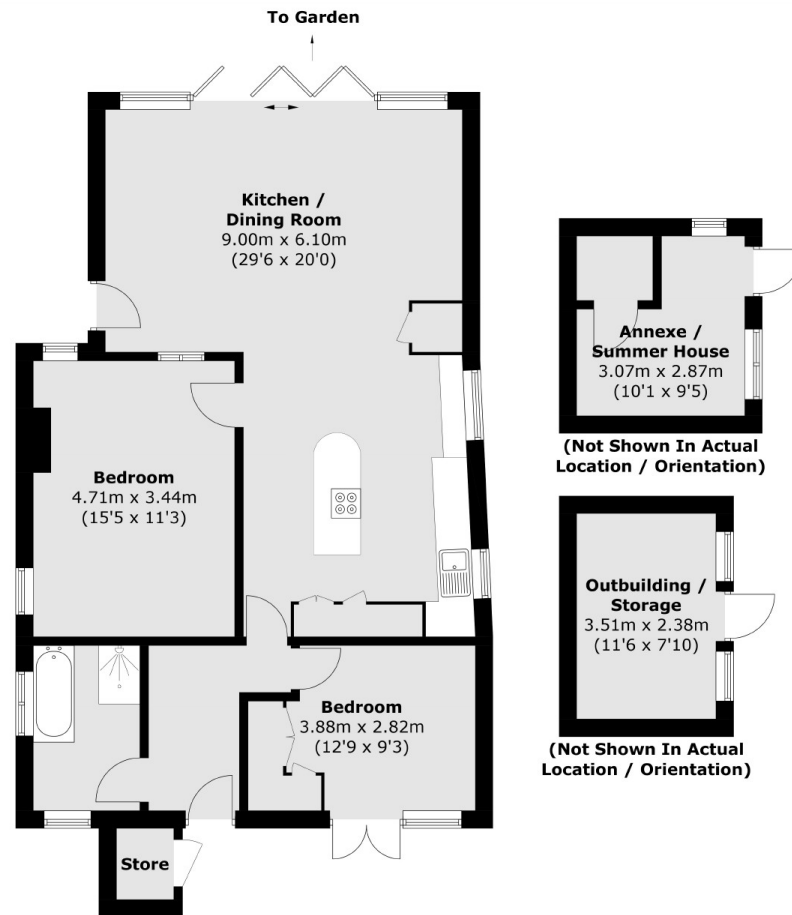
Riverside Home  
Two Bedrooms  
Annexe  
33' Mooring  
Private Island  
Three Parking Spaces







# Hamhaugh Island, Shepperton, TW17



Total area (approx.): 84.6 sq. m (910.6 sq. ft)  
Outbuildings (approx.): 18.6 sq. m (200.2 sq. ft)

## Contact

To arrange a viewing call our office on the number below or visit our website.



Energy Rating: E. We aim to make our particulars both accurate and reliable. However they are not guaranteed; nor do they form part of an offer or contract. If you require clarification on any points then please contact us, especially if you're traveling some distance to view. Please note that appliances and heating systems have not been tested and therefore no warranties can be given as to their good working order.



