



Loddon Drive, RG10

£1,999,999

Waterview  


A unique family home set in this idyllic spot overlooking The Thames, where it meets The Loddon, with breath taking river views on a plot of 1.4 acres with 670 ft of frontage and moorings.

Loddon Drive is a private road located close to the popular village of Wargrave, a short walk from the station.





The house is approached via a gated, gravel driveway to a large parking area and double garage. A pretty, covered footbridge takes you over The Loddon to the gardens, main house and cottage.

There is approximately 3,800 sq ft of flexible accommodation set overlooking the river front with fantastic views.

There is an integrated, one bedroom first floor maisonette within the main house and a separate guest cottage. The main house was rebuilt in 1964 and has been within the same family ownership for over 75 years.

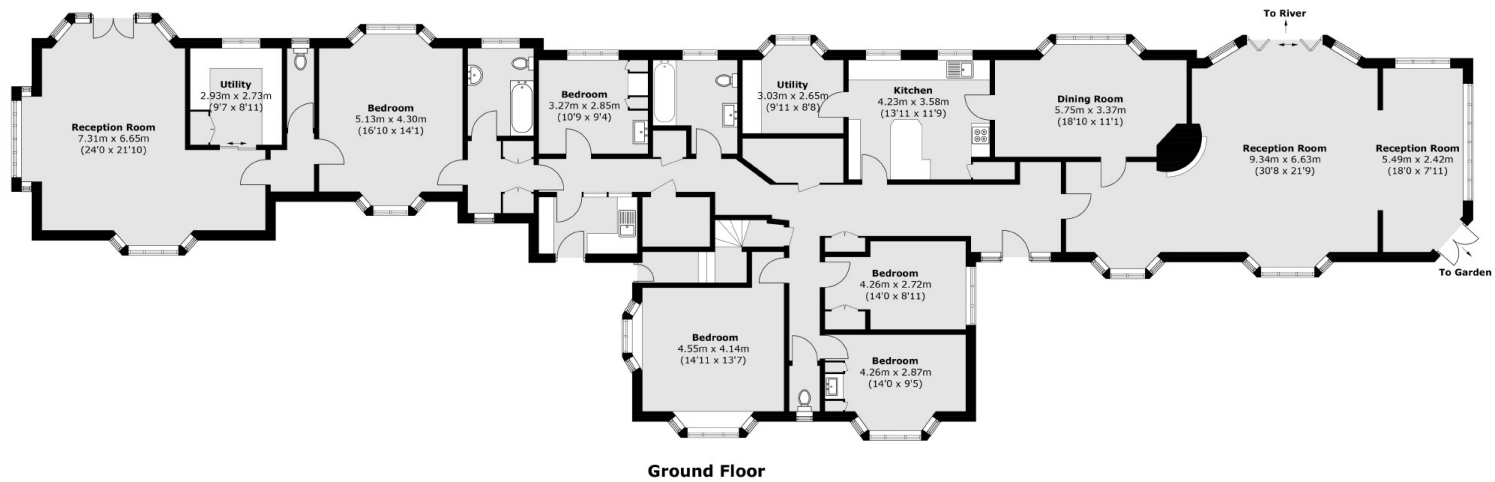
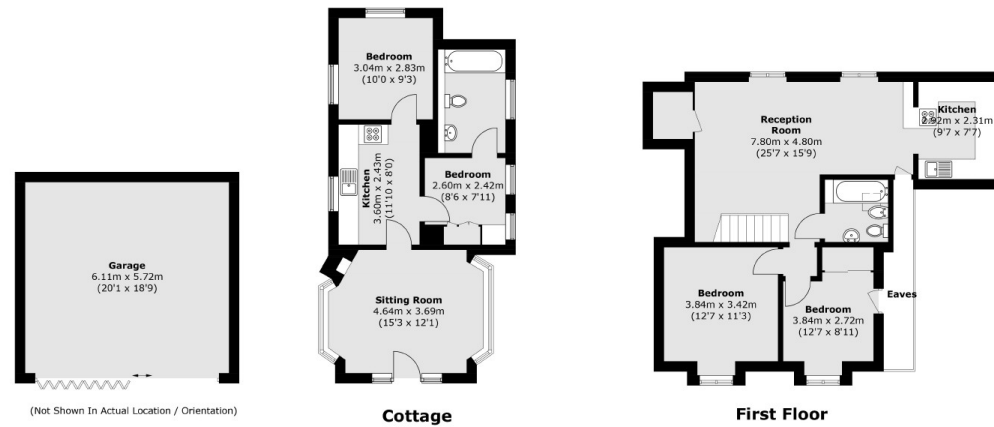
The house would benefit from updating to enhance this forever home. The mature gardens include a large lawned area and entertaining terrace. The huge frontage offer moorings for several boats.

### Features

- Unique family Home
- Huge River frontage
- Fantastic views
- Potential to modernise
- 1.4 acre plot
- No Chain



# Loddon Drive, Wargrave, RG10



Total area (approx.): 354.3 sq. m (3,813.6 sq. ft)  
 (Excluding Eaves)  
 Garage: 35.8 sq. m (385.3 sq. ft)  
 Cottage: 48.2 sq m (518.8 sq ft)

## Contact

To arrange a viewing call our office on the number below or visit our website.



Energy Rating: . We aim to make our particulars both accurate and reliable. However they are not guaranteed; nor do they form part of an offer or contract. If you require clarification on any points then please contact us, especially if you're traveling some distance to view. Please note that appliances and heating systems have not been tested and therefore no warranties can be given as to their good working order.

